

Dino-Lite: powerful, portable, versatile



INDEX

Universal range	5
Special technologies: EDOF - Extended Depth Of Field	8
High magnification range	9
Long Working Distance range	13
Special Lighting range	17
High Speed Real Time range	27
Basic range	33
Special technologies: EDR - Extended Dynamic Range	36
Mobile / Wireless range	37
Dino-Lite Medical range	41
Microscope Eyepiece cameras	45
Accessories	51
Accessories - Professional stands	52
Accessories- Basic stands	55
Accessories - Light & Control	57
Dino-Lite software	59
Dino-Lite for integration partners + SDK	62
Dino-Lite model overview	64

UNIVERSAL RANGE



HIGH MAGNIFICATION RANGE



BASIC RANGE



MOBILE / WIRELESS RANGE



LONG WORKING DISTANCE RANGE



SPECIAL LIGHTING RANGE



HIGH SPEED REAL TIME RANGE



MEDICAL RANGE



EYEPIECE CAMERAS RANGE



ACCESSORIES



Dino-Lite digital microscopes provide a powerful, portable and feature rich solution to microscopic inspection at up to 900x magnification and 5 Megapixel resolution high quality imaging and optics, feature rich software and advanced hardware features that sets the Dino-Lite range apart from any comparable products. As the inventor of the handheld digital USB microscope, Dino-Lite is now the market leader and industry standard for digital handheld microscopes. Nowadays the Dino-Lite digital microscope is an irreplaceable instrument for thousands of companies and professionals worldwide. With over 150 models the Dino-Lite range offers multiple connectivity options: USB, TV or VGA, as well as specialized illumination, such as ultraviolet or infrared, and numerous magnification ranges. A wide range of stands and accessories completes the product line-up and ensures that the Dino-Lite range offers solutions to meet the needs of the home user through to the most demanding professional.

Small in size, but full of functionality. The Dino-Lite digital microscope is a marvel of technology.



DINO-LITE UNIVERSAL



DINO-LITE UNIVERSAL



Key features

- ▶ Magnification of up to 200
- ▶ 1.3 megapixel or 5 megapixel
- ▶ With or without polarization filter
- ▶ Aluminum alloy housing or composite housing
- ▶ Edge series with Extended Depth of Field (EDOF) and Extended Dynamic Range (EDR)



The Dino-Lite Universal series provides a broad range of products with the highest image quality, as well as very user-friendly software with comprehensive measurement functions, and several unique hard and software features to satisfy the most demanding user.

This range consists of Dino-Lite models with a USB connection with a magnification of up to 200 times and an image resolution of 1.3 megapixel or 5 megapixel. For working with reflective objects you can choose the models with the built-in polarization filter with adaptable polarization. For the best look and feel and enhanced durability we offer models in robust aluminum alloy housing. The Dino-Lite Edge series is a special category within the Universal range, the Edge series provide an even better image quality and greater flexibility. The high-quality optics provide a very sharp, bright and natural color image with very low aberration and vignetting. The exchangeable caps provide for even more flexibility for use in all kinds of professional applications.



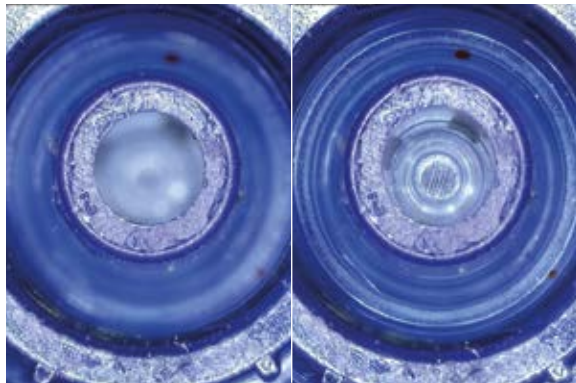
MODEL	RESOLUTION	MAGNIFICATION	CONNECTIVITY	LONG WORKING DISTANCE	MEASUREMENT & CALIBRATION	TYPE OF LEDS	NUMBER OF LEDS	EXCHANGABLE CAPS	POLARIZER	IR FILTER	METAL HOUSING	ESD-SAFE	ADDITIONAL FEATURES	PRICE RANGE	ALSO AVAILABLE
UNIVERSAL															
AM4113T	1,3 Megapixel	10-70x, 200x	USB 2.0	-	✓	white	8	-	-	IR cut-filter >650 nm	-	-	-	€200,00 - €350,00	
AM4013MT	1,3 Megapixel	10-70x, 200x	USB 2.0	-	✓	white	8	-	-	IR cut-filter >650 nm	✓	✓	-	€350,00 - €550,00	
AM4113ZT	1,3 Megapixel	10-70x, 200x	USB 2.0	-	✓	white	8	-	✓	IR cut-filter >650 nm	-	-	-	€200,00 - €350,00	
AM4013MZT	1,3 Megapixel	10-70x, 200x	USB 2.0	-	✓	white	8	-	✓	IR cut-filter >650 nm	✓	✓	-	€350,00 - €550,00	
AM4115T	1,3 Megapixel	20-220x	USB 2.0	-	✓	white	8	✓	-	IR cut-filter >650 nm	-	-	-	€350,00 - €550,00	
AM4115ZT	1,3 Megapixel	20-220x	USB 2.0	-	✓	white	8	✓	✓	IR cut-filter >650 nm	-	-	-	€350,00 - €550,00	
AM4515ZT	1,3 Megapixel	20-220x	USB 2.0	-	✓	white	8	✓	✓	IR cut-filter >650 nm	-	-	AMR	€350,00 - €550,00	AM4515T (without polarizer)
AM4815ZT	1,3 Megapixel	20-220x	USB 2.0	-	✓	white	8	✓	✓	IR cut-filter >650 nm	-	-	EDOF+EDR	€550,00 and above	AM4815T (without polarizer)
AM4115ZTW	1,3 Megapixel	10-50x	USB 2.0	-	✓	white	8	✓	✓	IR cut-filter >650 nm	-	-	Macro Zoom	€350,00 - €550,00	AM4115TW (without polarizer)
AM7013MZT	5 Megapixel	10-70x, 200x	USB 2.0	-	✓	white	8	-	✓	IR cut-filter >650 nm	✓	✓	-	€550,00 and above	AM7013MT (without polarizer)
AM7115MZT*	5 Megapixel	20-220x	USB 2.0	-	✓	white	8	✓	✓	IR cut-filter >650 nm	✓	✓	-	€550,00 and above	AM7115MT* (without polarizer)
AM7515MZT*	5 Megapixel	20-220x	USB 2.0	-	✓	white	8	✓	✓	IR cut-filter >650 nm	✓	✓	AMR	€550,00 and above	AM7515MT* (without polarizer)
AM7815MZT*	5 Megapixel	20-220x	USB 2.0	-	✓	white	8	✓	✓	IR cut-filter >650 nm	✓	✓	EDOF+EDR	€550,00 and above	AM7815MT* (without polarizer)

* Will be available soon

EDOF - EXTENDED DEPTH OF FIELD

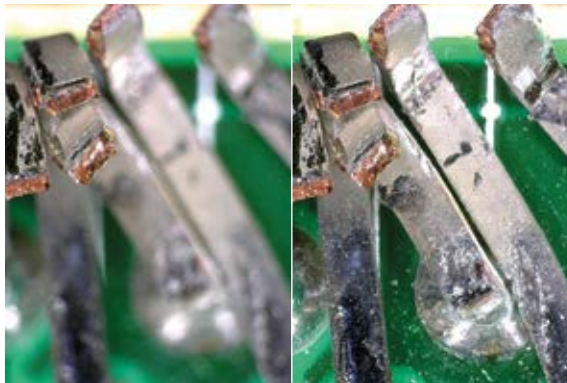
'Extended Depth of Field, also known as focus stacking, is a digital image processing technique which combines multiple images taken at different focus distances to give a resulting image with a greater depth of field (DOF) than any of the individual source images. Focus stacking can be used in any situation where individual images have a very shallow depth of field.' (source: Wikipedia)

Some Dino-Lite models offer this special technique, the EDOF capture mode can take several pictures at different levels of focus and stack them into a clear image automatically with 1 click of the mouse. The EDOF images maintain the picture quality from its original pictures and can be stored and viewed in the DinoCapture 2.0 software. All AM4815xx and AM7815xx models include EDOF technology.



Without EDOF

With EDOF



Without EDOF

With EDOF



Without EDOF

With EDOF

DINO-LITE HIGH MAGNIFICATION

DINO-LITE HIGH MAGNIFICATION

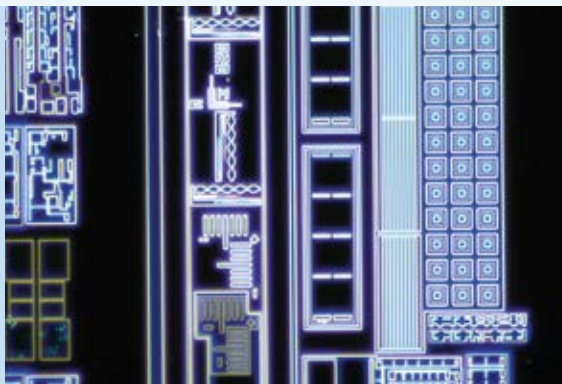
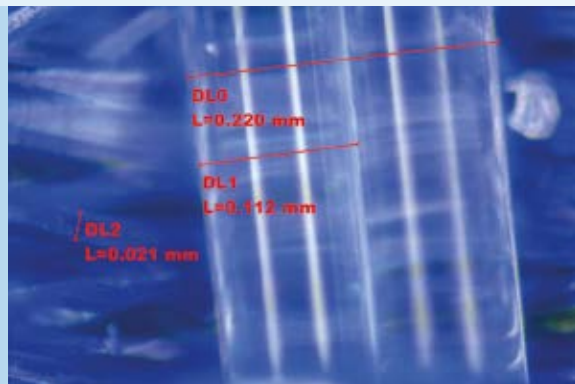


DINO-LITE HIGH MAGNIFICATION

More information on: www.dino-lite.eu/highmagnification

Dino-Lite models within the High Magnification series exceed a magnification of 200 times and offer magnifications of 400x, 500x or even a dazzling 900 times. Microscopes in this range offer an image resolution of 1.3 megapixel or 5 megapixel, a USB connection and include the user-friendly DinoCapture software. Models with built-in polarizer to reduce reflection or models with an extra robust metal housing are also available.

These unique features make the Dino-Lite High Magnification models great inspection tools for biomedical and scientific research, material analysis, electronics inspection, or any similar application that requires high magnification, versatility and mobility.





Key features

- ▶ Magnification of up to 900
- ▶ 1.3 megapixel or 5 megapixel
- ▶ With or without polarization filter
- ▶ Aluminum alloy housing or composite housing
- ▶ Edge series with Extended Depth of Field (EDOF) and Extended Dynamic Range (EDR)

MODEL	RESOLUTION	MAGNIFICATION	CONNECTIVITY	LONG WORKING DISTANCE	MEASUREMENT & CALIBRATION	TYPE OF LEDS	NUMBER OF LEDS	EXCHANGABLE CAPS	POLARIZER	IR FILTER	METAL HOUSING	ESD-SAFE	ADDITIONAL FEATURES	PRICE RANGE	ALSO AVAILABLE
HIGH MAGNIFICATION															
AM4113ZT4	1,3 Megapixel	400-470x	USB 2.0	-	✓	white	8	-	✓	IR cut-filter >650 nm	-	-	-	€200,00 - €350,00	
AM4013MZT4	1,3 Megapixel	400-470x	USB 2.0	-	✓	white	8	-	✓	IR cut-filter >650 nm	✓	✓	-	€350,00 - €550,00	
AM7013MZT4	5 Megapixel	400-470x	USB 2.0	-	✓	white	8	-	✓	IR cut-filter >650 nm	✓	✓	-	€550,00 and above	
AM4113T5	1,3 Megapixel	500x	USB 2.0	-	✓	white	8	-	-	IR cut-filter >650 nm	-	-	-	€200,00 - €350,00	
AM4013MT5	1,3 Megapixel	500x	USB 2.0	-	✓	white	8	-	-	IR cut-filter >650 nm	✓	✓	-	€350,00 - €550,00	
AM4515T5	1,3 Megapixel	500-550x	USB 2.0	-	✓	white	8	✓	-	IR cut-filter >650 nm	-	-	AMR	€350,00 - €550,00	
AM4515T8	1,3 Megapixel	700-900x	USB 2.0	-	✓	white	8	✓	-	IR cut-filter >650 nm	-	-	AMR	€550,00 and above	

HIGHLIGHTED PRODUCT More information on www.dino-lite.eu/am4515t8

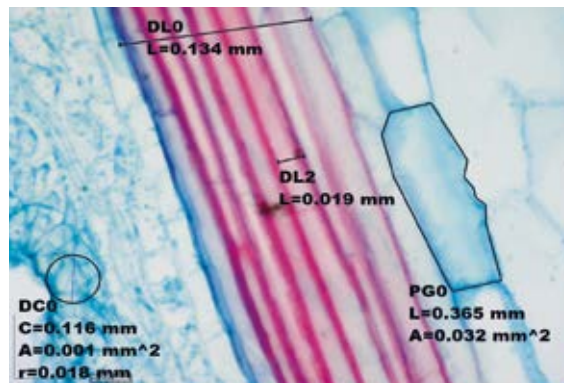
AM4515T8 – EDGE








With up to 900x magnification and high-resolution optics, this high magnification Dino-Lite model reveals details as small as 1.5 micrometer (μm). It also features a greater working distance at high magnification making it easier to watch and move very small objects under the microscope.

These unique features make the Dino-Lite AM4515T8 a great inspection tool for biomedical and scientific research, material analysis, electronics inspection, or any similar application that require high magnification, versatility and mobility. The Dino-Lite AM4515T8 is bundled with the user-friendly DinoCapture 2.0 software. For this model it includes functions such as automatic magnification reading (AMR), calibration, measurement, capturing & annotating images, and recording video. Although the AM4515T8 model can be operated handheld, a high-precision stand is recommended. The Dino-Lite RK-10A for example is a great add-on, it is a sturdy and stable high-end stand solution constructed of resilient stainless steel and lightweight aluminum and offers a very precise fine-focus adjustment.



HIGHLIGHTED PRODUCT



-  USB 2.0
-  MEASUREMENT FUNCTIONALITY
-  ADJUSTABLE ~700x-900x
-  AUTOMATIC MAGNIFICATION READING (AMR)
-  MAGNIFICATION LOCK
-  1.3 MEGAPIXEL 1280 x 1024
-  8 WHITE LEDs SWITCHABLE
-  EXCHANGEABLE CAP

DINO-LITE LONG WORKING DISTANCE



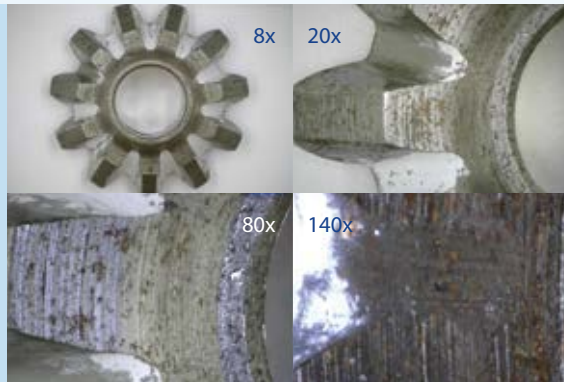
DINO-LITE LONG WORKING DISTANCE

DINO-LITE LONG WORKING DISTANCE More information on: www.dino-lite.eu/longworkingdistance



Key features

- ▶ Magnifications of 5 to 140 x
- ▶ Long working distance of up to 22,5 cm
- ▶ 1.3 megapixel or 5 megapixel
- ▶ With or without polarization filter
- ▶ Aluminum alloy housing or composite housing
- ▶ Edge series with Extended Depth of Field (EDOF) and Extended Dynamic Range (EDR)



For tasks where extra distance to the object and a larger field of view is required Dino-Lite offers a series of Long Working Distance (LWD) microscopes. The extra working distance and larger field of view make this series an ideal solution for tasks such as repair, rework or assembly or for working with bulky or fragile objects that cannot be touched.

Microscopes in this range offer an image resolution of 1.3 megapixel or 5 megapixel, a USB connection and include the user-friendly DinoCapture software. Models with built-in polarizer to reduce reflection or models with an extra robust metal housing are also available. The maximum magnification reaches 140 times which is usually more than enough for this kind of applications.



MODEL	RESOLUTION	MAGNIFICATION	CONNECTIVITY	LONG WORKING DISTANCE	MEASUREMENT & CALIBRATION	TYPE OF LEDS	NUMBER OF LEDS	EXCHANGABLE CAPS	POLARIZER	IR FILTER	METAL HOUSING	ESD-SAFE	ADDITIONAL FEATURES	PRICE RANGE	ALSO AVAILABLE
LONG WORKING DISTANCE (LWD)															
AM4113TL	1,3 Megapixel	10-90x	USB 2.0	✓	✓	white	8	-	-	IR cut-filter >650 nm	-	-	-	€200,00 - €350,00	
AM4013MTL	1,3 Megapixel	10-90x	USB 2.0	✓	✓	white	8	-	-	IR cut-filter >650 nm	✓	✓	-	€350,00 - €550,00	
AM4113TL-M40	1,3 Megapixel	5-40x	USB 2.0	✓	✓	white	8	-	-	IR cut-filter >650 nm	-	-	-	€200,00 - €350,00	
AM4113ZTL	1,3 Megapixel	10-90x	USB 2.0	✓	✓	white	8	-	✓	IR cut-filter >650 nm	-	-	-	€350,00 - €550,00	
AM4013MZTL	1,3 Megapixel	10-90x	USB 2.0	✓	✓	white	8	-	✓	IR cut-filter >650 nm	✓	✓	-	€350,00 - €550,00	
AM4115TL	1,3 Megapixel	10-140x	USB 2.0	✓	✓	white	8	✓	-	IR cut-filter >650 nm	-	-	-	€350,00 - €550,00	
AM4115ZTL	1,3 Megapixel	10-140x	USB 2.0	✓	✓	white	8	✓	✓	IR cut-filter >650 nm	-	-	-	€350,00 - €550,00	
AM4515ZTL	1,3 Megapixel	10-140x	USB 2.0	✓	✓	white	8	✓	✓	IR cut-filter >650 nm	-	-	AMR	€350,00 - €550,00	AM4515TL (without polarizer)
AM4815ZTL	1,3 Megapixel	10-140x	USB 2.0	✓	✓	white	8	✓	✓	IR cut-filter >650 nm	-	-	EDOF+EDR	€550,00 and above	AM4815TL (without polarizer)
AD4113ZTL	1,3 Megapixel	20-90x	USB 2.0	✓	✓	white	8	✓	✓	IR cut-filter >650 nm	-	-	-	€350,00 - €550,00	for usage with FC-L-MA1 mirror angle
AD4013MZTL	1,3 Megapixel	20-90x	USB 2.0	✓	✓	white	8	✓	✓	IR cut-filter >650 nm	✓	✓	-	€350,00 - €550,00	for usage with FC-L-MA1 mirror angle
AM7115MZTL*	5 Megapixel	10-140x	USB 2.0	✓	✓	white	8	✓	✓	IR cut-filter >650 nm	✓	✓	-	€550,00 and above	AM7115MTL* (without polarizer)
AM7515MZTL*	5 Megapixel	10-140x	USB 2.0	✓	✓	white	8	✓	✓	IR cut-filter >650 nm	✓	✓	AMR	€550,00 and above	AM7515MTL* (without polarizer)
AM7815MZTL*	5 Megapixel	10-140x	USB 2.0	✓	✓	white	8	✓	✓	IR cut-filter >650 nm	✓	✓	EDOF+EDR	€550,00 and above	AM7815MTL* (without polarizer)

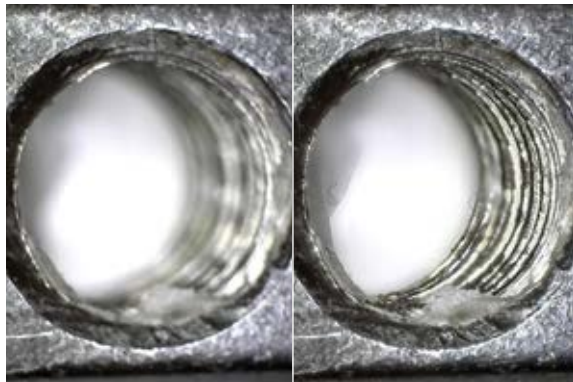
* Will be available soon

HIGHLIGHTED PRODUCT More information on www.dino-lite.eu/am4815ztl

AM4815ZTL - EDGE

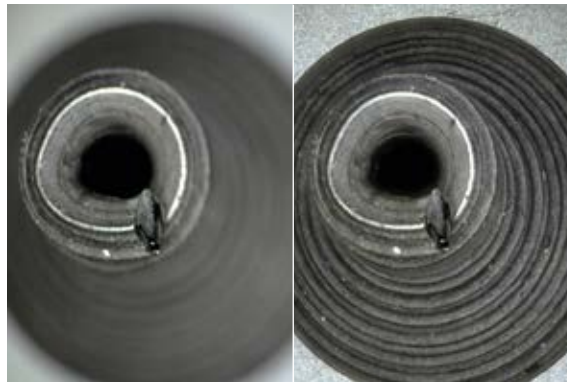
The AM4815ZTL combines features such as a Polarizer, Long Working Distance and a magnification range of 10x - 140x, with image processing features such as Extended Depth of Field (EDOF) and Extended Dynamic Range EDR.

With the Extended Dynamic Range (EDR) feature, the details of darker or brighter areas within the object can be revealed by stacking images at different exposure levels. The Extended Depth of Field (EDOF) feature automatically stacks images at different focus level to improve the depth of field on rough or uneven surfaces. Different caps are supplied with the microscope making the Dino-Lite Edge the perfect choice for any professional application.






Without EDOF

With EDOF



Without EDOF

With EDOF

-  USB 2.0
-  LONG WORKING DISTANCE
4-15 cm
-  CONTINUOUS
~10x-140x
-  EXTENDED DYNAMIC RANGE
-  EXTENDED DEPTH OF FIELD
EDOF
-  1.3 MEGAPIXEL
1280 x 1024
-  8 WHITE LEDs
SWITCHABLE
-  EXCHANGEABLE CAP
-  POLARIZER
ANTI-REFLECTION

DINO-LITE SPECIAL LIGHTING



DINO-LITE SPECIAL LIGHTING

DINO-LITE SPECIAL LIGHTING

Many specialized applications in science, forensics, industry, engineering or in the medical field, require special lighting. For many specific applications Dino-Lite models were created with ultra-violet lighting, infrared lighting, fluorescent lighting or even combinations between the different lighting types.

Dino-Lite microscopes in this range offer an optical resolution of 1.3 megapixel or 5 megapixel, a USB connection and include the user-friendly DinoCapture software. Magnification ranges from medium to high (until ~500x) are available. Models with an extra robust metal housing are part of this range. The widely acclaimed series of Dino-Lite fluorescence microscopes are considered to be the world's smallest fluorescence microscopes. Compared to the traditional fluorescence microscopes with band-pass type of emission filters, the Dino-Lites high-pass emission filters provide visibility and sensitivity over a larger range of the fluorescence wavelengths.



ULTRAVIOLET (UV)



Dino-Lite handheld microscopes with ultra-violet (UV) light or a combination between UV and white light.

FLUORESCENCE



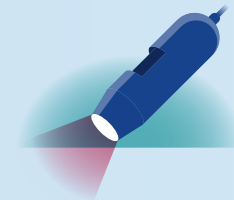
Dino-Lite handheld microscopes with fluorescent LEDs to detect fluorescence from 395nm to 610nm.

STROBOSCOPIC LIGHT



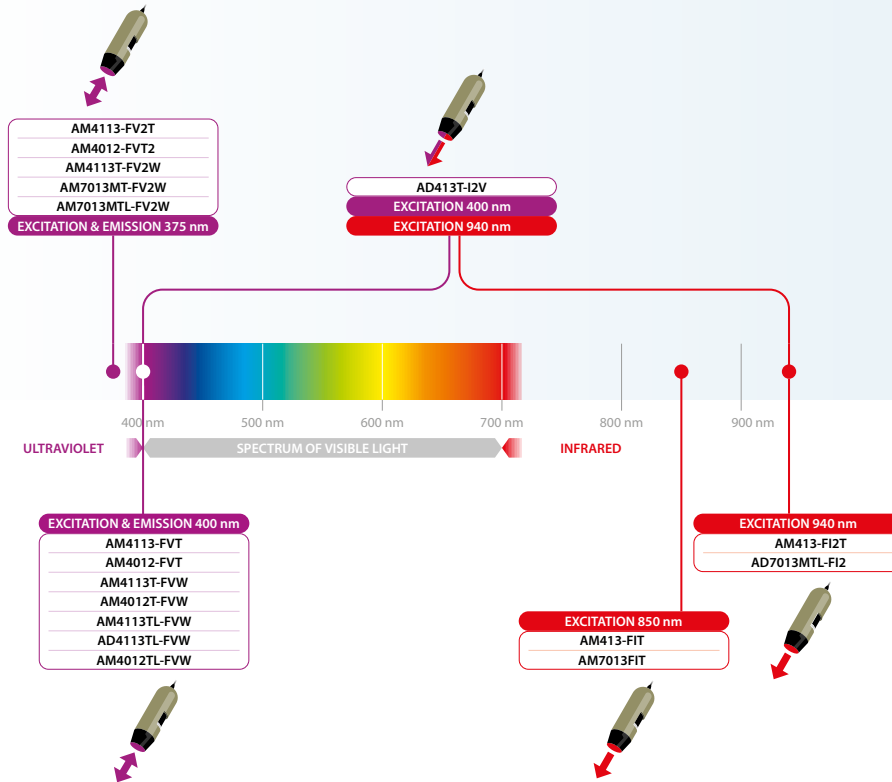
Dino-Lite handheld microscopes with stroboscopic technology to capture fast moving objects.

INFRARED (IR)

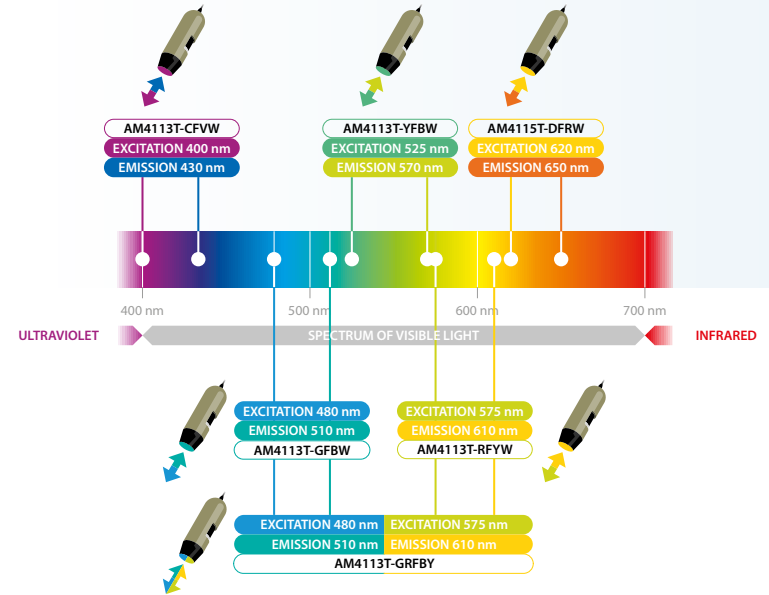


Dino-Lite handheld microscopes with infrared light or combinations between infrared and ultraviolet light.

UV and IR models:



Fluorescence models:



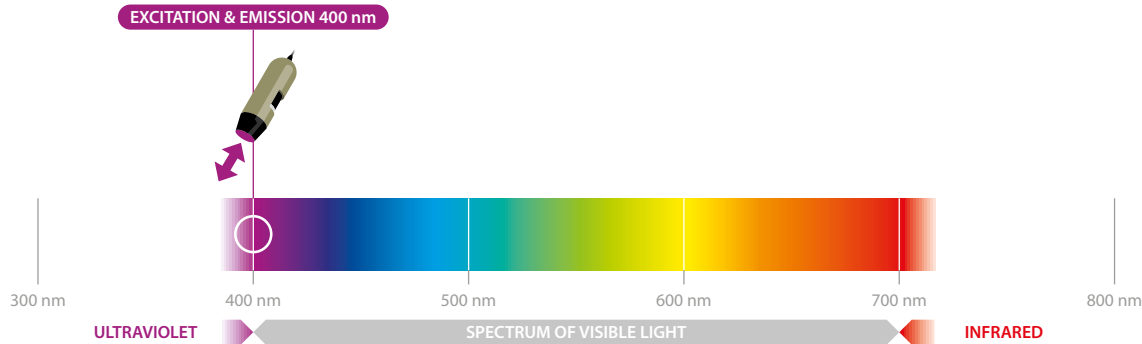
HIGHLIGHTED PRODUCT More information on www.dino-lite.eu/am4113t-fw

AM4113T-FVW ULTRAVIOLET

The VW series has two types of LED lights that are switchable between white and UV light. The ultraviolet LED's have an excitation of 390-400 nm. This model has a filter to filter out the returning UV light so that an image with natural colors can be obtained.

Also available in a version with ~375nm LEDs (model AM4113T-FV2W).

- USB 2.0
- MEASUREMENT FUNCTIONALITY
- ADJUSTABLE ~10-70x & 200x
- MAGNIFICATION LOCK
- 1.3 MEGAPIXEL 1280x1024
- UV-LEDs 390~400 nm
- SWITCHABLE UV/WHITE LEDs
- STANDARD WORKING DISTANCE



MAGNIFICATION RATE	WORKING DISTANCE	FIELD OF VIEW (X)	FIELD OF VIEW (Y)	DEPTH OF FIELD
20	48.7	19.8	14.9	3.6
30	21.7	13.2	9.9	1.9
40	9.0	9.9	7.4	-
50	1.9	7.9	5.9	0.88
60	-2.3	6.6	5.0	-
220	-0.1	1.8	1.4	0.20
230	1.0	1.7	1.3	-
240	2.1	1.7	1.2	-

DINO-LITE SPECIAL LIGHTING ULTRAVIOLET (UV)

More information on www.dino-lite.eu/ultraviolet

Dino-Lite handheld microscopes with ultraviolet (UV) light or a combination between UV and white light.



MODEL	RESOLUTION	MAGNIFICATION	CONNECTIVITY	LONG WORKING DISTANCE	MEASUREMENT & CALIBRATION	TYPE OF LEDS	NUMBER OF LEDS	EXCHANGABLE CAPS	POLARIZER	IR FILTER	OTHER FILTERS	METAL HOUSING	ESD-SAFE	ADDITIONAL FEATURES	PRICE RANGE	ALSO AVAILABLE
SPECIAL LIGHTING ULTRAVIOLET																
AM4113T-FVW	1,3 Megapixel	10-70x, 200x	USB 2.0	-	✓	390/400nm UV + white	4+4	-	-	IR cut-filter >650 nm	UV cut filter	-	-	-	€200,00 - €350,00	AM4113T-VW* and AD4113T-FVW**
AM4113T-FV2W	1,3 Megapixel	10-70x, 200x	USB 2.0	-	✓	375nm UV + white	4+4	-	-	IR cut-filter >650 nm	UV cut filter	-	-	-	€200,00 - €350,00	
AM4013MT-FVW	1,3 Megapixel	10-70x, 200x	USB 2.0	-	✓	390/400nm UV + white	4+4	-	-	IR cut-filter >650 nm	UV cut filter	✓	✓	-	€350,00 - €550,00	AM4013MT-VW (without UV cut filter)
AM4113TL-FVW	1,3 Megapixel	10-90x	USB 2.0	✓	✓	390/400nm UV + white	4+4	-	-	IR cut-filter >650 nm	UV cut filter	-	-	-	€350,00 - €550,00	AM4113TL-VW (without UV cut filter)
AM4013MTL-FVW	1,3 Megapixel	10-90x	USB 2.0	✓	✓	390/400nm UV + white	4+4	-	-	IR cut-filter >650 nm	UV cut filter	✓	✓	-	€350,00 - €550,00	AM4013MTL-VW (without UV cut filter)
AM4113FVT	1,3 Megapixel	10-70x, 200x	USB 2.0	-	✓	390/400nm UV	8	-	-	IR cut-filter >650 nm	Emission barrier filter 400 nm	-	-	-	€200,00 - €350,00	
AM4113FV2T	1,3 Megapixel	10-70x, 200x	USB 2.0	-	✓	375 nm UV	4	-	-	IR cut-filter >650 nm	Emission barrier filter 375 nm	-	-	-	€200,00 - €350,00	
AM7013MT-FV2W	5 Megapixel	10-70x, 200x	USB 2.0	-	✓	375nm UV + white	4+4	-	-	IR cut-filter >650 nm	UV cut filter	✓	✓	-	€550,00 and above	

* (without UV cut filter)









** (with exchangeable caps)

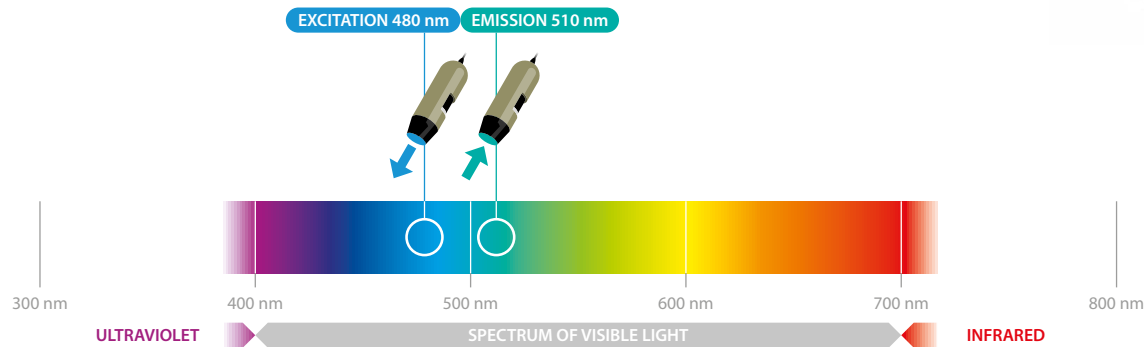
HIGHLIGHTED PRODUCT More information on www.dino-lite.eu/am4113t-gfbw

AM4113T-GFBW, FLUORESCENCE

The Dino-Lite AM4113T-GFBW digital microscope is optimized for research and viewing fluorescent objects by using blue LEDs. It has a 510 nm emission filter that is designed to observe green fluorescence including but not limited to GFP (green fluorescent protein). Compared to the traditional fluorescence microscope's band-pass type of emission filters, the Dino-Lite's high-pass type emission filter provides visibility and sensitivity over a larger range of the fluorescence wavelength. Green fluorescent objects pop out under the microscope and you can clearly see its green glow. The AM4113T-GFBW has the capability of switching the light source from the blue to white LEDs which is convenient for locating the object and obtaining an easy focus.

HIGHLIGHTED PRODUCT

-  USB 2.0
-  MEASUREMENT FUNCTIONALITY
-  ADJUSTABLE ~10-70x & 200x
-  MAGNIFICATION LOCK
-  1.3 MEGAPIXEL 1280x1024
-  FLUORESCENT LEDs ~ 480nm
-  SWITCHABLE UV/WHITE LEDs
-  STANDARD WORKING DISTANCE



DINO-LITE SPECIAL LIGHTING FLUORESCENCE

More information on www.dino-lite.eu/fluorescence

Dino-Lite handheld microscopes with fluorescent LEDs to visualize fluorescence from 395nm to 610nm



MODEL	RESOLUTION	MAGNIFICATION	CONNECTIVITY	LONG WORKING DISTANCE	MEASUREMENT & CALIBRATION	TYPE OF LEDES	NUMBER OF LEDES	EXCHANGABLE CAPS	POLARIZER	IR FILTER	OTHER FILTERS	METAL HOUSING	ESD-SAFE	ADDITIONAL FEATURES	PRICE RANGE	ALSO AVAILABLE
SPECIAL LIGHTING FLUORESCENCE																
AM4113T-CFVW	1,3 Megapixel	10-70x, 200x	USB 2.0	-	✓	400 nm UW + white	7+1	-	-	no	Emission passthrough filter 430 nm	-	-	-	€ 350 - € 550	
AM4113T-YFGW	1,3 Megapixel	10-70x, 200x	USB 2.0	-	✓	525 nm green + white	7+1	-	-	no	Emission passthrough filter 570 nm	-	-	-	€350,00 - €550,00	
AM4113T-RFYW	1,3 Megapixel	10-70x, 200x	USB 2.0	-	✓	575 nm yellow + white	7+1	-	-	no	Emission passthrough filter 610 nm	-	-	-	€350,00 - €550,00	
AM4113T-GFBW	1,3 Megapixel	10-70x, 200x	USB 2.0	-	✓	480 nm blue + white	7+1	-	-	no	Emission passthrough filter 510 nm	-	-	-	€350,00 - €550,00	AM4113T4-GFBW*

* with 400-470x magnification

Cell research made visible with usb fluorescence microscopy

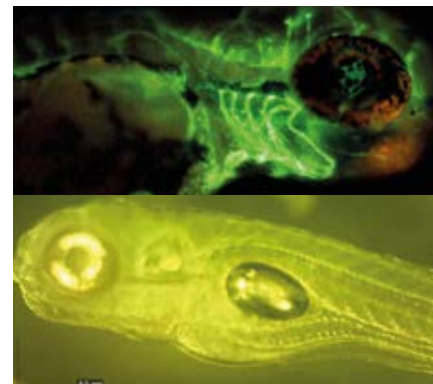
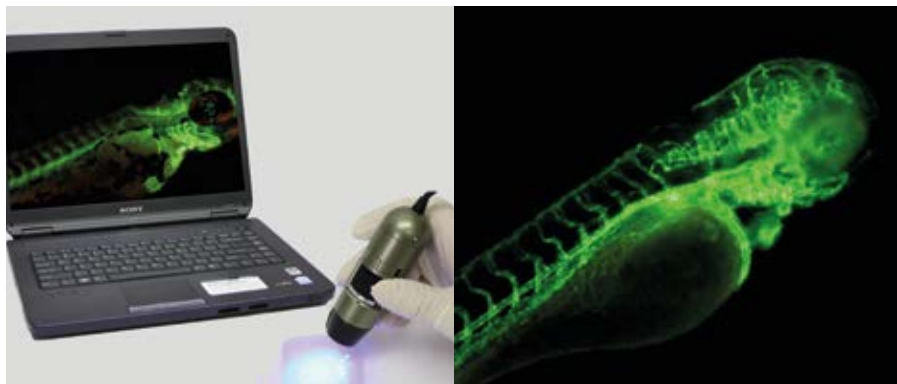
Dino-Lite helps researchers to form an image

Research into life-threatening diseases is of great importance. Miraculously a small striped fish with special light microscopy can play an important role. Professor Yung-Jen Chuang (47) from Taiwan is doing research with zebrafish using Dino-Lite fluorescence microscopes.

Within the National Tsing Hua University in Hsinchu, Taiwan, Professor Yung-Jen Chuang runs a laboratory for vascular biology. Vascular biology is the study of our circulatory system in all its forms, from the aorta to the smallest capillary in the brains. Professor Yung-Jen Chuang and his team are particularly interested in the molecular and cellular processes that occur when new blood vessels are formed from the existing blood vessels, a process that is called angiogenesis. The team is also investigating how tissue repair occurs after injury to vital organs such as heart or brains, and examines which reactions influence the blood circulation within a tumor.

The studies also involve functional genomics that aims to identify what specific genes work harder, for instance to speed up regeneration. Obviously Professor Yung-Jen Chuang is leading a team that consists of a large number of researchers, an even greater number of zebrafish and Dino-Lite fluorescence microscopes.

Professor Yung-Jen Chuang worked with Dino-Lite to develop the fluorescence digital microscopes: "I am delighted that the Dino-Lite fluorescence microscopes are of good quality and affordable. Moreover, they are easy to use. Thus, we can enable more researchers to work after minimal training, and also enlist various sets of Dino-Lites that we have for educational purposes. It is easy to show the images on a laptop, and we can store both video and still images to study changes in tissue better." Read the full case study on www.dino-lite.eu/zebrafish-research



DINO-LITE SPECIAL LIGHTING STROBOSCOPIC

More information on: www.dino-lite.eu/stroboscopic

Dino-Lite handheld microscopes with stroboscopic technology to capture fast moving objects.

Dino-Lite handheld microscopes with stroboscopic technology make it possible to capture fast moving objects. The Dino-Lite with stroboscopic light feature takes perfect pictures by reducing motion blur, even under higher magnification. The strobomicroscope technology enables you to capture fast moving objects in a very easy and convenient way. It can be used for monitoring production lines in a manufacturing environment, observing living creatures in a laboratory environment or any other application with fast-moving objects.

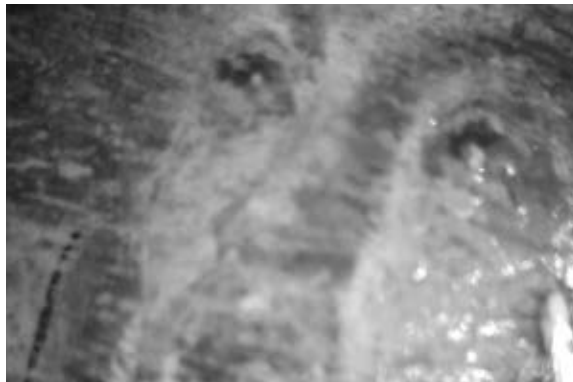


DINO-LITE SPECIAL LIGHTING

MODEL	RESOLUTION	MAGNIFICATION	CONNECTIVITY	LONG WORKING DISTANCE	MEASUREMENT & CALIBRATION	TYPE OF LEDS	NUMBER OF LEDS	EXCHANGABLE CAPS	POLARIZER	IR FILTER	OTHER FILTERS	METAL HOUSING	ESD-SAFE	ADDITIONAL FEATURES	PRICE RANGE
SPECIAL LIGHTING STROBOSCOPIC															
AM3713TB	VGA (640x480)	10-70x, 200x	USB 2.0	-	✓	white (stroboscopic)	8	-	-	IR cut-filter >650 nm	-	-	-	-	€200,00 - €350,00
AM3715TB	VGA (640x480)	20-220x	USB 2.0	-	✓	white (stroboscopic)	8	-	-	IR cut-filter >650 nm	-	-	-	-	€350,00 - €550,00

DINO-LITE SPECIAL LIGHTING INFRARED (IR) More information on www.dino-lite.eu/infrared

Dino-Lite handheld microscopes with infrared light or combinations between infrared and ultraviolet light.



MODEL	RESOLUTION	MAGNIFICATION	CONNECTIVITY	LONG WORKING DISTANCE	MEASUREMENT & CALIBRATION	TYPE OF LEDS	NUMBER OF LEDS	EXCHANGABLE CAPS	POLARIZER	IR FILTER	OTHER FILTERS	METAL HOUSING	ESD-SAFE	ADDITIONAL FEATURES	PRICE RANGE	ALSO AVAILABLE
SPECIAL LIGHTING INFRARED																
AM413FIT	1,3 Megapixel	10-70x, 200x	USB 2.0	-	✓	850 nm IR	8	-	-	IR pass filter	Emission passthrough filter 850 nm	-	-	-	€200,00 - €350,00	AM413FI2T (with ~940 nm LED)
AD4113T-I2V	1,3 Megapixel	20-200x	USB 2.0	-	✓	390/400 nm UV + 940 nm IR	4+4	✓	-	no	-	-	-	-	€350,00 - €550,00	
AM7013M-FIT	5 Megapixel	10-70x, 200x	USB 2.0	-	✓	850 nm IR	8	-	-	IR pass filter	Emission passthrough filter 850 nm	✓	✓	-	€550,00 and above	
AD7013MTL-FI2	5 Megapixel	20-90x	USB 2.0	✓	✓	940 nm IR	8	✓	-	IR pass filter	Emission passthrough filter 850 nm	✓	✓	-	€550,00 and above	

DINO-LITE HIGH SPEED REAL TIME

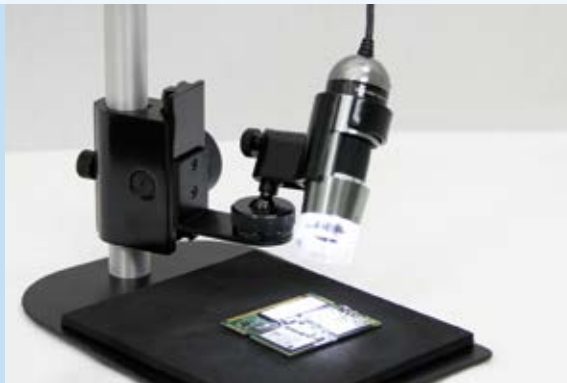


DINO-LITE HIGH SPEED REALTIME

DINO-LITE HIGH SPEED REAL TIME More information on www.dino-lite.eu/highspeedrealtime

For working in environments where you do not want to use a computer, or when a real-time video stream is required, a Dino-Lite with DVI, VGA or direct TV connection might be the best solution.

The Dino-lite series with a VGA connector can be plugged directly into a computer monitor (VGA screen) and the DVI and TV models can be connected directly to the TV screen. A great advantage of the High-Speed Real-time models is that they offer a high frame rate of up to 60 frames per second; ideal in situations where real time images are vital, such as working on PCB's or with objects that need to be moved around under the microscope.

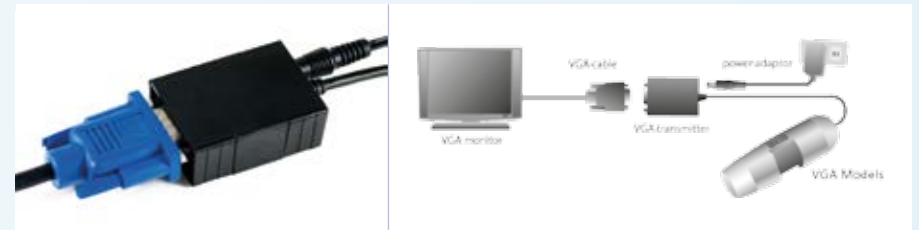


DINO-LITE HIGH SPEED REAL TIME DIRECT VGA CONNECTION (D-SUB)



High Speed Real Time models that connect directly to a computer monitor/VGA screen via a VGA (D-SUB) connector.

High Speed Real Time models that connect directly to a VGA screen via a VGA (D-SUB) connector. It offers a high frame rate of up to 60 fps at 800 x 600 resolution and has enhanced low light visibility so you can see clearly in any situation. More information on www.dino-lite.eu/highspeedrealtime.



MODEL	RESOLUTION	MAGNIFICATION	INTERFACE	LONG WORKING DISTANCE	TYPE OF LEDS	NUMBER OF LEDS	EXCHANGEABLE CAPS	POLARIZER	IR FILTER	METAL HOUSING	ESD-SAFE	FREEZE FRAME FUNCTION	PRICE RANGE	ALSO AVAILABLE
HIGH SPEED REAL TIME - VGA														
AM4116T	800x600	10-70x, 200x	VGA (D-Sub)	-	white	8	-	-	IR cut-filter >650 nm	-	-	-	€200,00 - €350,00	Also available: AM4116ZT with polarizer
AM4116ZTL	800x600	10-90x	VGA (D-Sub)	✓	white	8	-	✓	IR cut-filter >650 nm	-	-	-	€350,00 - €550,00	Also available: AM4116TL without polarizer
AM5116ZT	1024x768	10-70x, 200x	VGA (D-Sub)	-	white	8	-	✓	IR cut-filter >650 nm	-	-	✓	€350,00 - €550,00	Also available: AM5116T without polarizer
AM5116ZTL	1024x768	10-90x	VGA (D-Sub)	✓	white	8	-	✓	IR cut-filter >650 nm	-	-	✓	€350,00 - €550,00	
AM5216ZT	1024x768	20-220x	VGA (D-Sub)	-	white	8	✓	✓	IR cut-filter >650 nm	-	-	✓	€350,00 - €550,00	Also available: AM5216T without polarizer
AM5216ZTL	1024x768	10-140x	VGA (D-Sub)	✓	white	8	✓	✓	IR cut-filter >650 nm	-	-	✓	€350,00 - €550,00	Also available: AM5216TL without polarizer

DINO-LITE HIGH SPEED REAL TIME HIGH DEFINITION CONNECTION (DVI)

High Speed Real Time models that connect directly to a computer monitor or a TV screen via a DVI connector.

The Dino-Lite High Speed Real Time models can be connected directly to a HD TV or a LCD monitor through a direct digital DVI interface. It offers sharp and vibrant HD 720p resolution to display even the smallest details. These models are an ideal choice in situations where real time images are vital, such as working on PCB's or other miniature objects. By tapping the Microtouch sensor on the microscope, the image can be frozen for inspection of important details and by pressing the Microtouch sensor for 2 seconds the LEDs can be switched on and off. The aluminum housing offers enhanced protection and durability and has the best look and feel. More information on www.dino-lite.eu/high-speedrealtime.



MODEL	RESOLUTION	MAGNIFICATION	INTERFACE	LONG WORKING DISTANCE	TYPE OF LEDS	NUMBER OF LEDS	EXCHANGEABLE CAPS	POLARIZER	IR FILTER	METAL HOUSING	ESD-SAFE	FREEZE FRAME FUNCTION	PRICE RANGE	ALSO AVAILABLE
HIGH SPEED REALTIME - DVI														
AM5018MT	HD 720p	10-70x, 200x	High Definition (DVI)	-	white	8	-	-	IR cut-filter >650 nm	✓	✓	✓	€550,00 and above	
AM5018MZT	HD 720p	10-70x, 200x	High Definition (DVI)	-	white	8	-	✓	IR cut-filter >650 nm	✓	✓	✓	€550,00 and above	
AM5018MZTL	HD 720p	10-90x	High Definition (DVI)	✓	white	8	-	✓	IR cut-filter >650 nm	✓	✓	✓	€550,00 and above	

DINO-LITE HIGH SPEED REAL TIME DIRECT TV CONNECTION (RCA)

High Speed Real Time models that connect to a TV screen via a RCA connection. The universal RCA connector can be used to connect the TV models directly to a TV screen or any device with RCA input.

More information on www.dino-lite.eu/highspeedrealtime.



DINO-LITE HIGH SPEED REALTIME

MODEL	RESOLUTION	MAGNIFICATION	INTERFACE	LONG WORKING DISTANCE	TYPE OF LEDS	NUMBER OF LEDS	EXCHANGEABLE CAPS	POLARIZER	IR FILTER	METAL HOUSING	ESD-SAFE	FREEZE FRAME FUNCTION	PRICE RANGE	ALSO AVAILABLE
HIGH SPEED REAL TIME - TV														
AM4112PT	628x586	10-70x, 200x	TV (RCA) PAL	-	white	8	-	-	IR cut-filter >650 nm	-	-	-	€200,00 - €350,00	AM4112PZT with polarizer, also available in metal housing
AM4112PTL	628x586	10-90x	TV (RCA) PAL	✓	white	8	-	-	IR cut-filter >650 nm	-	-	-	€200,00 - €350,00	AM4112PZTL with polarizer, also available in metal housing
AM5212PT	960H (960x480)	20-220x	TV (RCA) PAL	-	white	8	✓	-	IR cut-filter >650 nm	-	-	-	€200,00 - €350,00	AM5212PZT with polarizer
AM5212PTL	960H (960x480)	10-140x	TV (RCA) PAL	✓	white	8	✓	-	IR cut-filter >650 nm	-	-	-	€200,00 - €350,00	

HIGHLIGHTED PRODUCT More information on www.dino-lite.eu/am5018mztl

HIGHLIGHTED PRODUCT

AM5018MZTL HIGH DEFINITION

The Dino-Lite AM5018MZTL can be connected directly to a HDTV or a LCD monitor through a direct digital DVI interface. It offers sharp and vibrant HD 720p resolution to display even the smallest details.

Together with the long working distance of up to 15 centimeters the AM5018MZTL is the ideal choice in situations, where real time images are vital, such as working on PCB's or other miniature objects. By tapping the Microtouch sensor on the microscope, the image can be frozen for inspection of important details and by pressing the Microtouch sensor for 2 seconds the LEDs can be switched on and off. The aluminum housing offers enhanced protection and durability and has the best look and feel. The built-in adjustable polarizer reduces glare and reflection on shiny objects, such as metal surfaces, electronics, plastics etc.



MAGNIFICATION RATE	WORKING DISTANCE	FIELD OF VIEW (X)	FIELD OF VIEW (Y)	DEPTH OF FIELD
20	160.5	19.8	14.9	6
30	110.4	13.2	9.9	3.4
40	86.7	9.9	7.4	2.2
50	73.6	7.9	5.9	1.65
60	65.7	6.6	5.0	-
70	60.8	5.7	4.2	-
80	57.8	5.0	3.7	-
90	56.1	4.4	3.3	0.8

DINO-LITE BASIC



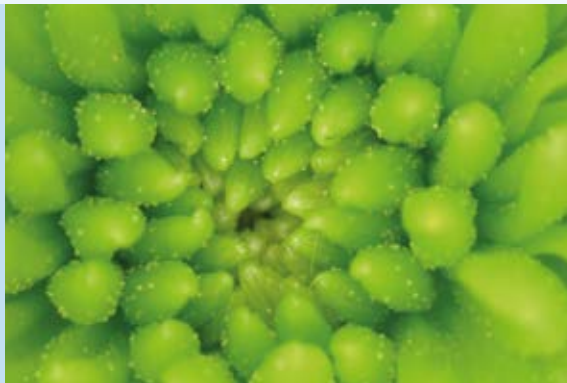
DINO-LITE BASIC

DINO-LITE BASIC

More information on www.dino-lite.eu/Basic

For general purpose applications, where high image resolution and advanced hardware and software features are not strictly necessary, the Dino-Lite basic series is a good choice.

These Dino-Lite models are affordable and an easy-to-use, but still have the same durability and quality as the more advanced Dino-Lite product series. A basic version of the proprietary DinoCapture software is included with each Dino-Lite. The magnification of the microscopes goes from 10 to 70x and around 200x. These models provide an economic and easy-to-use solution, mainly for home use and light professional applications.



AM2111 Basic

The Dino-Lite AM2111 Basic is an excellent choice for hobbyists, schools, kids or any other cost sensitive application.

AM3113T

The AM3113T has both the measurement functions and the Microtouch button to capture pictures directly from the Dino-Lite. The improved image sensor provides a high quality image with very natural colors and it also offers a high refresh rate for better real time images. It is an affordable solution for industrial, scientific and business use.



AM2111 Basic



AM3113T



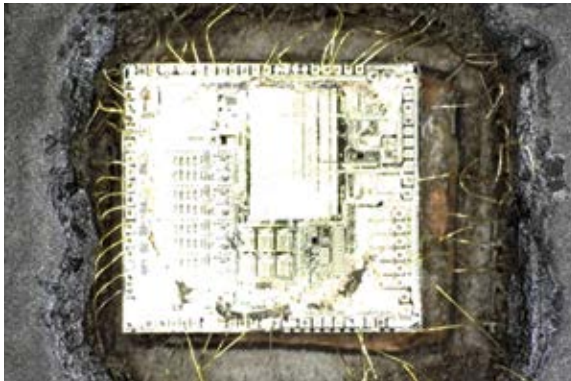
MODEL	RESOLUTION	MAGNIFICATION	CONNECTIVITY	LONG WORKING DISTANCE	MEASUREMENT & CALIBRATION	TYPE OF LEDS	NUMBER OF LEDS	EXCHANGABLE CAPS	POLARIZER	IR FILTER	METAL HOUSING	ESD-SAFE	ADDITIONAL FEATURES	PRICE RANGE
BASIC														
AM2111	VGA 640x480	10-70x, 200x	USB 2.0	-	-	white	4	-	-	IR cut-filter >650 nm	-	-	-	€0 - €200,00
AM3113T	VGA 640x480	10-70x, 200x	USB 2.0	-	✓	white	8	-	-	IR cut-filter >650 nm	-	-	-	€0 - €200,00

EDR – EXTENDED DYNAMIC RANGE

EDR is a set of techniques used in imaging and photography to reproduce a greater dynamic range of luminosity than possible using standard digital imaging or photographic techniques.

EDR images can represent a greater range of luminance levels found in real-world scenes, from direct sunlight to faint nebula. It is often achieved by capturing and then combining different exposures of the same subject matter (source: Wikipedia). EDR (Extended Dynamic Range) is an image processing tool exclusive to some of the Dino-Lite Edge models (DinoCapture 2.0 version 1.4.8 and higher). For surfaces with large variation in brightness, the EDR capture tool can be ideal for capturing a more neutral image of the surface by only a few clicks. The EDR capture mode takes 3 pictures at different exposure levels (standard, underexposed and overexposed) and stacks them into a clear image automatically with 1 click of the mouse. The EDR images can be stored and viewed in the DinoCapture 2.0 software. All AM4815xx and AM7815xx models include EDR technology.

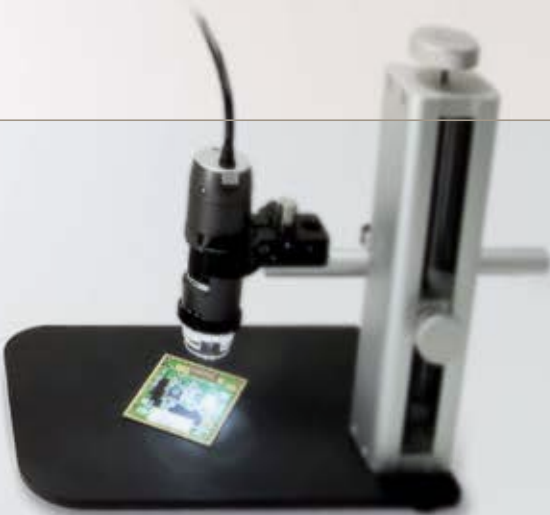
Without EDR



With EDR



DINO-LITE MOBILE / WIRELESS



DINO-LITE MOBILE / WIRELESS

DINO-LITE MOBILE / WIRELESS MOBILE RECORDER More information on: www.dino-lite.eu/mobile-recorder

The ultimate solution in portable microscopy, a dedicated combination of a Dino-Lite digital microscope with high magnification and a portable digital recorder with a 5 inch LCD panel.

The D15 LCD recorder is a lightweight, pocket sized inspection device with real time image/video capture options. Pictures and videos can be recorded onto a MicroSD card, so that they can be easily transferred to the PC with the USB cable or card reader. A great tool for scientific or medical field research or for quality control in production environments. The D15 LCD recorder has an internal rechargeable battery and is supplied with the special AMK4012 model Dino-Lite with an AV connection.



MODEL	RESOLUTION	MAGNIFICATION	INTERFACE	LONG WORKING DISTANCE	MEASUREMENT & CALIBRATION	TYPE OF LEDS	NUMBER OF LEDS	EXCHANGABLE CAPS	POLARIZER	IR FILTER	METAL HOUSING	ESD-SAFE	PRICE RANGE
MOBILE RECORDER													
AMK4012T-D15	720x576 px	10-70x, 200x	TV (RCA) PAL	-	-	white	8	-	-	IR cut-filter >650 nm	-	-	> €550,00
AMK4012ZT-D15	720x576 px	10-70x, 200x	TV (RCA) PAL	-	-	white	8	-	✓	IR cut-filter >650 nm	-	-	> €550,00
AMK4012TL-D15	720x576 px	10-90x	TV (RCA) PAL	✓	-	white	8	-	-	IR cut-filter >650 nm	-	-	> €550,00

DINO-LITE MOBILE / WIRELESS WIFI STREAMER

More information on www.dino-lite.eu/wifstreamer

Use your Dino-Lite digital microscope wirelessly with an iPad, iPhone, or other mobile device.

The WF-10 WiFi Streamer allows Dino-Lite USB models to be used wirelessly in connection with an iOS (iPhone, iPad or Android) app or through a web browser on any tablet, smartphone, or computer. The WiFi Streamer is ideal for field work or presentations. Stream from one Dino-Lite to multiple devices. The WF-10 has a built-in battery and can be used anywhere to create a WiFi signal for streaming the Dino-Lite live images.



DinoConnect:



ANDROID APP ON
Google play

Available on the
App Store

DINO-LITE MOBILE / WIRELESS TABLET SOLUTIONS More information on www.dino-lite.eu/tablets



Connect compatible Dino-Lite models directly to your Windows 8 tablet via USB. Ideal for Dino-Lite power on the go!

- ▶ Windows 8 allows compatible Dino-Lite to connect directly via USB with the DinoCapture software. Or use a Windows Surface tablet with the built-in driver and the native camera app to perform inspections.
- ▶ No additional equipment or power source required.

- ▶ Live viewing
- ▶ Capture images and video
- ▶ Portable inspection



Dino-Lite

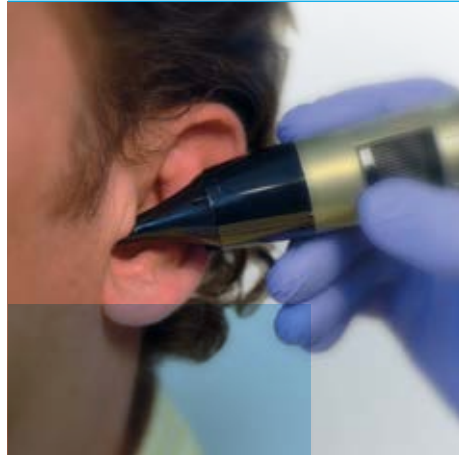
Digital Microscope Medical

Dino-Lite digital microscopes have already proven their worth across the world. Many different professionals use any of the more than 100 different model Dino-Lites every day. All models are easy to use, versatile and dedicated to their daily task. Dino-Lite has become an indispensable tool for many people.

The healthcare models have the features of the general Dino-Lite models like the built-in LED lights and the possibility to store images and video on the computer, but also the specially designed caps for each application and the availability of a polarization filter on some models. All Dino-Lite's receive power through the USB port which makes them independent of batteries. All models in this product range are certified according to the Medical Device Directive 93/42/EEC modified 2007/47/EC.



Dino-Lite USB microscopes. For specialists.



Dino-Lite EarScope

The Dino-Lite EarScope is a digital Otoscope that is easy to use and will be very helpful in general practice, in Audiology and for ear, nose and throat specialists. With the EarScope you can easily inspect and photograph the ear canal, the ear drum and the outer ear.

More information on: www.dino-lite.eu/earscope



Dino-Lite PodoScope

Podiatrists have several tools at their disposal such as a foot mirror and a foot scanner, but they can also use the Dino-Lite PodoScope. With the Podoscope they can detect microangiopathy at an early stage, which means that diabetic neuropathy can be prevented.

More information on: www.dino-lite.eu/podoscope



Dino-Lite DermaScope®

The Dino-Lite DermaScope® is an easy to use digital microscope that can make high quality closeup images and video of skin. These images go much further than the digital camera with macro lens that is common for this application. This is why many professionals are now using the Dino-Lite DermaScope®. More information on: www.dino-lite.eu/dermascope



Dino-Lite CapillaryScope

The Dino-Lite CapillaryScope can show the capillaries in high magnification, as well as the decrease in capillaries, knot formation in capillaries and bleeding. Capillaroscopy of the cuticle can demonstrate, for example, scleroderma or dermatomyositis.

More information on: www.dino-lite.eu/capillarscope



Dino-Lite IriScope

The Dino-Lite IriScope is handy, easy to use and a valuable tool for every medical practice. You can make razor-sharp images of the Iris with the magnification of 10-20 times that allows you to see details that can hardly be seen by the naked eye.

More information on: www.dino-lite.eu/iriscopes



Dino-Lite TrichoScope

The Dino-Lite TrichoScope is a perfect tool for trichoscopy, as the digital microscope is a great tool to study the scalp, hair shaft and the hair itself in detail.

More information on: www.dino-lite.eu/trichoscope

For detailed information on Dino-Lite medical products visit dino-lite.eu/medical or request the Dino-Lite medical brochure.

DINO-EYE EYEPIECE CAMERAS



DINO-LITE EYEPIECE CAMERAS

DINO-EYE EYEPIECE CAMERAS

With the DinoEye eyepiece cameras you can turn your conventional microscope into a digital microscope. You can easily replace the ocular (eyepiece) of your non-digital microscope with the DinoEye eyepiece and connect it via USB to your computer. The DinoEye TV models can be connected straight into your TV using a TV connection. With the included proprietary Dino-Capture software you have a professional software environment for image or video processing, including calibrated measurement features (USB models only).



DINO-EYE EYEPIECE CAMERAS BASIC

More information on: www.dino-lite.eu/dinoeyebasic



AM4023

The AM4023 fits into 23mm oculars.

- USB 2.0
- MEASUREMENT FUNCTIONALITY
- 1.3 MEGAPIXEL 1280 x 1024
- FITS 23 mm OCULARS



AM4023X

The AM4023X has different adapters to fit microscopes with 23, 30 or 30,5 mm eyepieces. Also available with TV connection: A422PX

- USB 2.0
- MEASUREMENT FUNCTIONALITY
- 1.3 MEGAPIXEL 1280 x 1024
- FITS 23, 30, 30,5 mm OCULARS



AM423U

The AM423U is a universal eyepiece version that fits over existing oculars up to 36 mm.

- USB 2.0
- MEASUREMENT FUNCTIONALITY
- 1.3 MEGAPIXEL 1280 x 1024
- FITS OVER OCULARS UP TO 36 mm



AM4023CT

The AM4023CT can be mounted to optical devices with a C-mount adapter (not included), like endoscopes or microscopes.

- USB 2.0
- MEASUREMENT FUNCTIONALITY
- 1.3 MEGAPIXEL 1280 x 1024
- CONNECTS TO C-MOUNT

DINOEYE C-MOUNT CAMERAS

The DinoEye C-mount cameras bring digital microscopy to any existing device such as microscopes or endoscopes with a C-Mount adapter. This gives the users the main advantages of digital microscopy such as digital storage and forwarding of images, video and time-lapse videos.

The live image can be shown to other people, not just watched through the oculars. Images can be annotated, measurements can be made on live or stored image. This is very valuable for high end applications in microscopy such as blood research, (micro) biology, electron microscopy and darkfield microscopy. Several endoscopy applications such as automotive inspection, leak and welding inspection and construction are also compatible with the DinoEye C-mount cameras if they have a C-mount connection or a separate C-mount coupler. The DinoEye images can also be used in shared environments together with Dino-Lite digital microscopes because they share the same software: DinoCapture. In this way existing investments in traditional microscopy can be upgraded with new technology and even coexist with Dino-Lite's innovative digital technology. The DinoEye C-mount camera is available in 1,3 megapixel and 5 megapixel resolutions.



DINO-EYE EYEPIECE CAMERAS HR 5 MEGAPIXEL

More information on: www.dino-lite.eu/dinoeyehr



AM7023

The AM7023 fits into 23mm oculars.



USB 2.0



MEASUREMENT
FUNCTIONALITY



5 MEGAPIXEL
2592 x 1944



FITS 23 mm
OCULARS



AM7023B

The AM7023B has different adapters to fit microscopes with 30 and 30,5 mm eyepieces.



USB 2.0



MEASUREMENT
FUNCTIONALITY



5 MEGAPIXEL
2592 x 1944



FITS 23, 30, 30,5 mm
OCULARS



AM7023CT

The Dino-Eye AM7023CT can be mounted to optical devices with a C-mount adapter, like endoscopes or microscopes.



USB 2.0



MEASUREMENT
FUNCTIONALITY



5 MEGAPIXEL
2592 x 1944



CONNECTS
TO C-MOUNT



DINO-LITE ACCESSORIES



DINO-LITE ACCESSORIES PROFESSIONAL STANDS

More information on: www.dino-lite.eu/professionalstands



RK10A

A sturdy and high-end professional stand solution. It is constructed of resilient stainless steel and light-weight aluminum for a very precise fine-focus adjustment and a quick release function.

MS36B

Square metal base with column and support providing several adaptable heights. It has a horizontal beam for additional flexibility. Also available: MS36BE - ESD safe version.

MS35B

Square metal base with column and support providing several adaptable heights. It is a stable vertical desktop stand to be used with all Dino-Lite microscopes. Also available: MS35BE - ESD safe version.

MS34B

For precision focus and stable viewing in a compact design. Due to the precision vertical movement of the holster, a steady view can be obtained, even at higher magnifications.

MS52B

Dino-Lite heavy duty jointed flex arm stand.

A sturdy and reliable stand solution is a must-have for your high precision Dino-Lite digital microscope. A broad range of stands, caps, microscope tables and other accessories is offered. From affordable basic stands to a square metal base column stand. Or from an advanced XY table to a USB powered backlight. All original Dino-Lite accessories are made at the same high quality design and construction level.



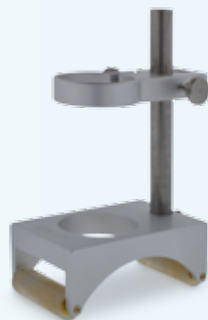
MS15X

High precision X/Y table



MS25X

X/Y inspection table



MS-W1

Special stand for cylinder surfaces
or to roll on flat surfaces.



MSAK810

Adjustable flex arm which
can be attached to the pole
of a MS35B/MS36B



RK-02

A heavy duty gooseneck stand

HIGHLIGHTED PRODUCT More information on: www.dino-lite.eu/rk-10a

HIGHLIGHTED PRODUCT

RK10A

A sturdy and stable high-end stand solution. The Dino-Lite RK-10A is a sturdy and stable high-end stand solution that can be used with all the professional Dino-Lite models. It is constructed of resilient stainless steel and lightweight aluminum and offers a very precise fine-focus adjustment as well as a quick release function.

The quick release button allows for fast and convenient vertical movement and the fine-focus adjustment knob is especially useful at high magnification. This model also includes an adjustable safety stop to prevent the microscope from touching the specimen. Its adjustable horizontal arm has a 15cm range with 360-degree rotation and the additional arm (included) increases its effective range to observe larger objects. With these features, the RK-10A is the ideal accessory for precise orientation and positioning for maximum productivity and ease of use in a wide range of environments including industrial, scientific and laboratory settings. Available extensions for the RK-10A stand: RK-10-EX: additional horizontal arm - RK-10-FX: flexible arm extension – RK-10-VX: vertical arm extension.



Available extensions for the RK-10A stand:



RK-10-EX: additional horizontal arm



RK-10-FX: flexible arm extension



RK-10-VX: vertical arm extension

DINO-LITE ACCESSORIES BASIC STANDS

More information on: www.dino-lite.eu/basicstands



MS33W
Round metal base with flexible arm and holder for the Dino-Lite.



MS23B
The MS23B is a desktop clamp with flexible gooseneck that can be clamped to a desktop.



MS12C
The MS12C consists of a base unit with two insert adapters.



MS09B
The MS09B is an ultra-portable mini stand.



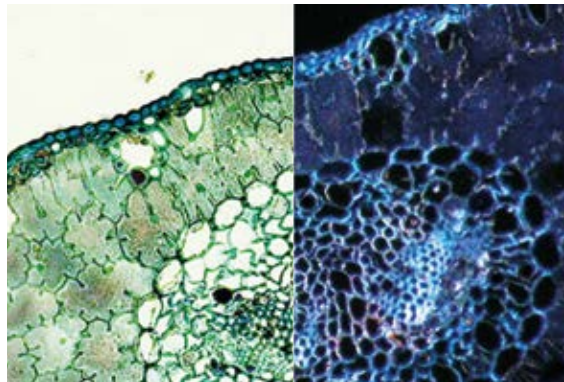
MS16C
Specimen holder stand with different clips to hold specimens.

HIGHLIGHTED PRODUCT More information on: www.dino-lite.eu/bl-cdw

BL-CDW, DARK FIELD / BRIGHT FIELD BACKLIGHT

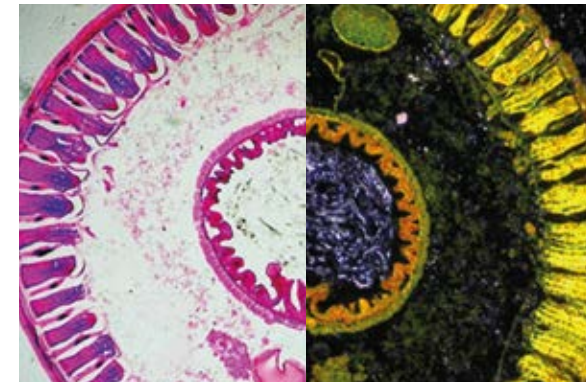
The Dino-Lite backlight stage BL-CDW allows two different types of lighting: brightfield and darkfield. In the brightfield mode, the light is transmitted from below the sample that shows up vividly showing the form and structure of the specimen on a bright background.

With darkfield illumination, the transmitted light will not reach the microscope and will therefore not be part of the image. The image will show bright objects on an almost black background. This type of light is not only suitable for prepared specimen but also for live specimen such as flagellum, the pseudopod movement, spirochete and more. Both types of illumination allow for high contrast, clear images and adds a whole new dimension to the Dino-Lite digital handheld microscopes with magnifications over 100x.



Bright field

Dark field



Bright field

Dark field

DINO-LITE ACCESSORIES LIGHT & CONTROL

More information on: www.dino-lite.eu/lightcontrol



BL-CDW

Brightfield/Darkfield Backlight Illuminator. The Dino-Lite backlight stage BL-CDW allows two different types of lighting: brightfield and darkfield.



SW-F1

Foot pedal accessory allowing you to take a picture with your foot. No additional software is required, simply plug in the device into your USB port and it is ready to use.



SL-ZW1

Polarized USB powered gooseneck light with adjustable polarization.



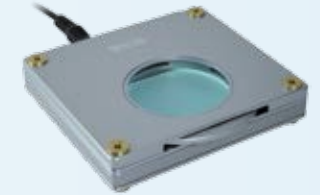
N3C-R

The N3C-R is a passive ring light solution that helps to reveal more details by generating shadow-less illumination



KM01

The KM-01 can be used to control the Dino-Lite focus wheel without touching the device. This is especially useful when the Dino-Lite needs to be isolated during use.



BL-ZW1

USB or DC powered backlight with a built in, freely rotatable polarizer.

DINO-LITE SOFTWARE



DINO-LITE SOFTWARE

A professional, reliable software environment is essential when working with computer equipment like an USB microscope. All Dino-Lite USB products are delivered with an in-house developed software program.

The Dino-Lite software is continuously developed, is free of charge for Dino-Lite users and has an automatic update feature. Dino-Lite software is available for Windows and for MacOS (DinoXcope). DinoCapture software is intuitive, user-friendly and can be used with hardly any training. Free online & e-mail software support is available.

The DinoCapture 2.0 software is available in many languages, such as: English, German, French, Spanish, Chinese, Japanese, Korean, Portuguese, Italian, Russian, Dutch, Greek, Hungarian, Polish, Romanian, Swedish, Finnish, Danish, Czech, Croatian, Norwegian, Turkish, Arabic.

Main software features:

- ▶ Capturing photographs, videos or time-lapsed videos
- ▶ Saving pictures in several formats
- ▶ Advanced image processing
- ▶ Measurement options like: line, radius, circle, 3-point circle, angle, etc.
- ▶ Measurements on captured images or on live images
- ▶ Calibration
- ▶ E-mail integration
- ▶ Adding notes and markings on images
- ▶ Skype integration for real-time on-line sharing with suppliers, customers or colleagues
- ▶ Connect multiple Dino-Lite microscopes
- ▶ Controlling lighting options from the software
- ▶ IP functionality for remote viewing of microscopic images
- ▶ Barcode/QR code recognition functionality
- ▶ GPS integration

Advanced measurement options like:
line, radius, circle, 3-point circle, angle, etc.

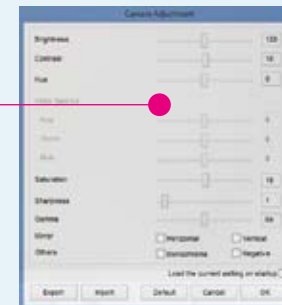
Calibration functionality



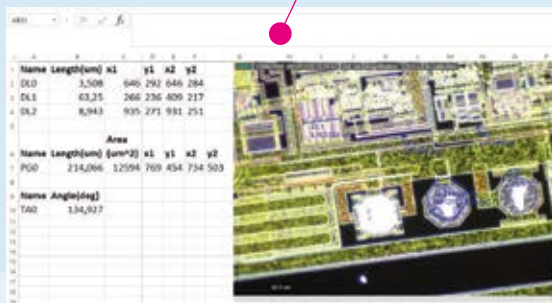
Settings menu



Capturing photographs, videos
or time-lapsed videos



Camera adjustment
settings such as white balance,
auto exposure, etc.



Detailed Excel
report including
measurement data

Auto-update functionality
(free of charge updates)



Magnifier for more precise
measurements

DINO-LITE SOFTWARE SDK SYSTEM INTEGRATION / SOFTWARE DEVELOPMENT KIT

System integration is bringing together components into one system ensuring that all elements function together. Visualization with (high) magnification is often the key to provide visual or automatic inspection or analysis. This is exactly what Dino-Lite can help you with when you do not have or do not want to have the expertise needed for developing optical equipment.

With over 10 years of highly specialized knowledge and skills Dino-Lite is seen as the expert in the field of digital optics and digital microscopy. This expertise is being used by many companies around the world that produce, develop and sell high-tech machines and devices and need the best suitable quality inspection tool to integrate into their equipment.

These devices cover a wide variety of applications, Dino-Lite microscopes are integrated in machines for tissue engineering, laser hair removal, drink can seam inspection, machines for material analysis, specialist laboratory equipment and other equipment for quality assurance tasks.

- 1 Drinks can seam inspection with Dino-Lite
- 2 Print quality control system with Dino-Lite integrated
- 3 Nanoindentation system with a Dino-Lite in use
- 4 Mass spectrometer with ion source
- 5 DVS Advantage system with integrated Dino-Lite for visualisation of samples
- 6 Service engineer inspection kit with Dino-Lite



Customization and Software Development Kit (SDK)

If you need a Dino-Lite digital microscope but need extra customization or features? From custom LED wavelength to special adapters or accessories, contact us with your ideas and we will work to find a solution for your needs. We can also supply a software development kit (SDK) which allows developers to easily add control of Dino-Lite digital microscopes. It works with any Windows-compatible device and offers complete control over LED and Microtouch on the Dino-Lite. Moreover, it provides simple methods for extracting color, real-time binary image, image comparing, etc. The SDK is available free of charge for Dino-Lite partners and users.

Third party software

All Dino-Lite USB products are supplied with the DinoCapture and DinoXcope software, which was developed in-house and provides an excellent and stable software environment with features that fulfill most application needs. Specific applications or specialized markets often require additional functionality. To stay ahead of the market we are constantly looking to integrate new and specialized software packages with the Dino-Lite digital microscopes. This makes the combination between the Dino-Lite hardware and software even more suitable to the high demands of markets like the industrial or medical sectors.



MODEL OVERVIEW UNIVERSAL – HIGH MAGNIFICATION

MODEL	RESOLUTION	MAGNIFICATION	CONNECTIVITY	LONG WORKING DISTANCE	MEASUREMENT & CALIBRATION	TYPE OF LEDS	NUMBER OF LEDS	EXCHANGABLE CAPS	POLARIZER	IR FILTER	METAL HOUSING	ESD-SAFE	ADDITIONAL FEATURES	PRICE RANGE	ALSO AVAILABLE
UNIVERSAL															
AM4113T	1,3 Megapixel	10-70x, 200x	USB 2.0	-	✓	white	8	-	-	IR cut-filter >650 nm	-	-	-	€200,00 - €350,00	
AM4013MT	1,3 Megapixel	10-70x, 200x	USB 2.0	-	✓	white	8	-	-	IR cut-filter >650 nm	✓	✓	-	€350,00 - €550,00	
AM4113ZT	1,3 Megapixel	10-70x, 200x	USB 2.0	-	✓	white	8	-	✓	IR cut-filter >650 nm	-	-	-	€200,00 - €350,00	
AM4013MZT	1,3 Megapixel	10-70x, 200x	USB 2.0	-	✓	white	8	-	✓	IR cut-filter >650 nm	✓	✓	-	€350,00 - €550,00	
AM4115T	1,3 Megapixel	20-220x	USB 2.0	-	✓	white	8	✓	-	IR cut-filter >650 nm	-	-	-	€350,00 - €550,00	
AM4115ZT	1,3 Megapixel	20-220x	USB 2.0	-	✓	white	8	✓	✓	IR cut-filter >650 nm	-	-	-	€350,00 - €550,00	
AM4515ZT	1,3 Megapixel	20-220x	USB 2.0	-	✓	white	8	✓	✓	IR cut-filter >650 nm	-	-	AMR	€350,00 - €550,00	AM4515T (without polarizer)
AM4815ZT	1,3 Megapixel	20-220x	USB 2.0	-	✓	white	8	✓	✓	IR cut-filter >650 nm	-	-	EDOF+EDR	€550,00 and above	AM4815T (without polarizer)
AM4115ZTW	1,3 Megapixel	10-50x	USB 2.0	-	✓	white	8	✓	✓	IR cut-filter >650 nm	-	-	Macro Zoom	€350,00 - €550,00	AM4115TW (without polarizer)
AM7013MZT	5 Megapixel	10-70x, 200x	USB 2.0	-	✓	white	8	-	✓	IR cut-filter >650 nm	✓	✓	-	€550,00 and above	AM7013MT (without polarizer)
AM7115MZT*	5 Megapixel	20-220x	USB 2.0	-	✓	white	8	✓	✓	IR cut-filter >650 nm	✓	✓	-	€550,00 and above	AM7115MT* (without polarizer)
AM7515MZT*	5 Megapixel	20-220x	USB 2.0	-	✓	white	8	✓	✓	IR cut-filter >650 nm	✓	✓	AMR	€550,00 and above	AM7515MT* (without polarizer)
AM7815MZT*	5 Megapixel	20-220x	USB 2.0	-	✓	white	8	✓	✓	IR cut-filter >650 nm	✓	✓	EDOF+EDR	€550,00 and above	AM7815MT* (without polarizer)
HIGH MAGNIFICATION															
AM4113ZT4	1,3 Megapixel	400-470x	USB 2.0	-	✓	white	8	-	✓	IR cut-filter >650 nm	-	-	-	€200,00 - €350,00	
AM4013MZT4	1,3 Megapixel	400-470x	USB 2.0	-	✓	white	8	-	✓	IR cut-filter >650 nm	✓	✓	-	€350,00 - €550,00	
AM7013MZT4	5 Megapixel	400-470x	USB 2.0	-	✓	white	8	-	✓	IR cut-filter >650 nm	✓	✓	-	€550,00 and above	
AM4113T5	1,3 Megapixel	500x	USB 2.0	-	✓	white	8	-	-	IR cut-filter >650 nm	-	-	-	€200,00 - €350,00	
AM4013MT5	1,3 Megapixel	500x	USB 2.0	-	✓	white	8	-	-	IR cut-filter >650 nm	✓	✓	-	€350,00 - €550,00	
AM4515T5	1,3 Megapixel	500-550x	USB 2.0	-	✓	white	8	✓	-	IR cut-filter >650 nm	-	-	AMR	€350,00 - €550,00	
AM4515T8	1,3 Megapixel	700-900x	USB 2.0	-	✓	white	8	✓	-	IR cut-filter >650 nm	-	-	AMR	€550,00 and above	

* Will be available soon

LONG WORKING DISTANCE (LWD) – HIGH SPEED REAL TIME

MODEL	RESOLUTION	MAGNIFICATION	CONNECTIVITY / INTERFACE	LONG WORKING DISTANCE	MEASUREMENT & CALIBRATION	TYPE OF LEDS	NUMBER OF LEDS	EXCHANGABLE CAPS	POLARIZER	IR FILTER	METAL HOUSING	ESD-SAFE	ADDITIONAL FEATURES	PRICE RANGE	ALSO AVAILABLE
LONG WORKING DISTANCE (LWD)															
AM4113TL	1,3 Megapixel	10-90x	USB 2.0	✓	✓	white	8	-	-	IR cut-filter >650 nm	-	-	-	€200,00 - €350,00	
AM4013MTL	1,3 Megapixel	10-90x	USB 2.0	✓	✓	white	8	-	-	IR cut-filter >650 nm	✓	✓	-	€350,00 - €550,00	
AM4113TL-M40	1,3 Megapixel	5-40x	USB 2.0	✓	✓	white	8	-	-	IR cut-filter >650 nm	-	-	-	€200,00 - €350,00	
AM4113ZTL	1,3 Megapixel	10-90x	USB 2.0	✓	✓	white	8	-	✓	IR cut-filter >650 nm	-	-	-	€350,00 - €550,00	
AM4013MZTL	1,3 Megapixel	10-90x	USB 2.0	✓	✓	white	8	-	✓	IR cut-filter >650 nm	✓	✓	-	€350,00 - €550,00	
AM4115TL	1,3 Megapixel	10-140x	USB 2.0	✓	✓	white	8	✓	-	IR cut-filter >650 nm	-	-	-	€350,00 - €550,00	
AM4115ZTL	1,3 Megapixel	10-140x	USB 2.0	✓	✓	white	8	✓	✓	IR cut-filter >650 nm	-	-	-	€350,00 - €550,00	
AM4515ZTL	1,3 Megapixel	10-140x	USB 2.0	✓	✓	white	8	✓	✓	IR cut-filter >650 nm	-	-	AMR	€350,00 - €550,00	AM4515TL (without polarizer)
AM4815ZTL	1,3 Megapixel	10-140x	USB 2.0	✓	✓	white	8	✓	✓	IR cut-filter >650 nm	-	-	EDOF+EDR	€550,00 and above	AM4815TL (without polarizer)
AD4113ZTL	1,3 Megapixel	20-90x	USB 2.0	✓	✓	white	8	✓	✓	IR cut-filter >650 nm	-	-	-	€350,00 - €550,00	For usage with FC-L-MA1 mirror angle
AD4013MZTL	1,3 Megapixel	20-90x	USB 2.0	✓	✓	white	8	✓	✓	IR cut-filter >650 nm	✓	✓	-	€350,00 - €550,00	For usage with FC-L-MA1 mirror angle
AM7115MZTL*	5 Megapixel	10-140x	USB 2.0	✓	✓	white	8	✓	✓	IR cut-filter >650 nm	✓	✓	-	€550,00 and above	AM7115MTL* (without polarizer)
AM7515MZTL*	5 Megapixel	10-140x	USB 2.0	✓	✓	white	8	✓	✓	IR cut-filter >650 nm	✓	✓	AMR	€550,00 and above	AM7515MTL* (without polarizer)
AM7815MZTL*	5 Megapixel	10-140x	USB 2.0	✓	✓	white	8	✓	✓	IR cut-filter >650 nm	✓	✓	EDOF+EDR	€550,00 and above	AM7815MTL* (without polarizer)
HIGH SPEED REAL TIME - VGA															
AM4116T	800x600	10-70x, 200x	VGA (D-Sub)	-	-	white	8	-	-	IR cut-filter >650 nm	-	-	-	€200,00 - €350,00	Also available: AM4116ZT with polarizer
AM4116ZTL	800x600	10-90x	VGA (D-Sub)	✓	-	white	8	-	✓	IR cut-filter >650 nm	-	-	-	€350,00 - €550,00	Also available: AM4116TL without polarizer
AM5116ZT	1024x768	10-70x, 200x	VGA (D-Sub)	-	-	white	8	-	✓	IR cut-filter >650 nm	-	-	Freeze Frame Function	€350,00 - €550,00	Also available: AM5116T without polarizer
AM5116ZTL	1024x768	10-90x	VGA (D-Sub)	✓	-	white	8	-	✓	IR cut-filter >650 nm	-	-	Freeze Frame Function	€350,00 - €550,00	
AM5216ZT	1024x768	20-220x	VGA (D-Sub)	-	-	white	8	✓	✓	IR cut-filter >650 nm	-	-	Freeze Frame Function	€350,00 - €550,00	Also available: AM5216T without polarizer
AM5216ZTL	1024x768	10-140x	VGA (D-Sub)	✓	-	white	8	✓	✓	IR cut-filter >650 nm	-	-	Freeze Frame Function	€350,00 - €550,00	Also available: AM5216TL without polarizer
HIGH SPEED REAL TIME - DVI															
AM5018MT	HD 720p	10-70x, 200x	High Definition (DVI)	-	-	white	8	-	-	IR cut-filter >650 nm	✓	✓	Freeze Frame Function	€550,00 and above	
AM5018MZT	HD 720p	10-70x, 200x	High Definition (DVI)	-	-	white	8	-	✓	IR cut-filter >650 nm	✓	✓	Freeze Frame Function	€550,00 and above	
AM5018MZTL	HD 720p	10-90x	High Definition (DVI)	✓	-	white	8	-	✓	IR cut-filter >650 nm	✓	✓	Freeze Frame Function	€550,00 and above	
HIGH SPEED REAL TIME - TV															
AM4112PT	628x586	10-70x, 200x	TV (RCA) PAL	-	-	white	8	-	-	IR cut-filter >650 nm	-	-	-	€200,00 - €350,00	AM4112PZT with polarizer, also avail. in metal housing
AM4112PTL	628x586	10-90x	TV (RCA) PAL	✓	-	white	8	-	-	IR cut-filter >650 nm	-	-	-	€200,00 - €350,00	AM4112PZTL with polarizer, also avail. in metal housing
AM5212PT	960H (960x480)	20-220x	TV (RCA) PAL	-	-	white	8	✓	-	IR cut-filter >650 nm	-	-	-	€200,00 - €350,00	AM5212PZT with polarizer
AM5212PTL	960H (960x480)	10-140x	TV (RCA) PAL	✓	-	white	8	✓	-	IR cut-filter >650 nm	-	-	-	€200,00 - €350,00	

* Will be available soon

SPECIAL LIGHTING

MODEL	RESOLUTION	MAGNIFICATION	CONNECTIVITY	LONG WORKING DISTANCE	MEASUREMENT & CALIBRATION	TYPE OF LEDS	NUMBER OF LEDS	EXCHANGABLE CAPS	POLARIZER	IR FILTER	OTHER FILTERS	METAL HOUSING	ESD-SAFE	ADDITIONAL FEATURES	PRICE RANGE	ALSO AVAILABLE
SPECIAL LIGHTING ULTRAVIOLET																
AM4113T-FVW	1,3 Megapixel	10-70x, 200x	USB 2.0	-	✓	390/400nm UV + white	4+4	-	-	IR cut-filter >650 nm	UV cut filter	-	-	-	€200,00 - €350,00	AM4113T-VW* and AD4113T-FVW**
AM4113T-FV2W	1,3 Megapixel	10-70x, 200x	USB 2.0	-	✓	375nm UV + white	4+4	-	-	IR cut-filter >650 nm	UV cut filter	-	-	-	€200,00 - €350,00	
AM4013MT-FVW	1,3 Megapixel	10-70x, 200x	USB 2.0	-	✓	390/400nm UV + white	4+4	-	-	IR cut-filter >650 nm	UV cut filter	✓	✓	-	€350,00 - €550,00	AM4013MT-VW (without UV cut filter)
AM4113TL-FVW	1,3 Megapixel	10-90x	USB 2.0	✓	✓	390/400nm UV + white	4+4	-	-	IR cut-filter >650 nm	UV cut filter	-	-	-	€350,00 - €550,00	AM4113TL-VW (without UV cut filter)
AM4013MTL-FVW	1,3 Megapixel	10-90x	USB 2.0	✓	✓	390/400nm UV + white	4+4	-	-	IR cut-filter >650 nm	UV cut filter	✓	✓	-	€350,00 - €550,00	AM4013MTL-VW (without UV cut filter)
AM4113FVT	1,3 Megapixel	10-70x, 200x	USB 2.0	-	✓	390/400nm UV	8	-	-	IR cut-filter >650 nm	Emission barrier filter 400 nm	-	-	-	€200,00 - €350,00	
AM4113FV2T	1,3 Megapixel	10-70x, 200x	USB 2.0	-	✓	375 nm UV	4	-	-	IR cut-filter >650 nm	Emission barrier filter 375 nm	-	-	-	€200,00 - €350,00	
AM7013MT-FV2W	5 Megapixel	10-70x, 200x	USB 2.0	-	✓	375nm UV + white	4+4	-	-	IR cut-filter >650 nm	UV cut filter	✓	✓	-	€550,00 and above	
SPECIAL LIGHTING FLUORESCENCE																
AM4113T-CFVW	1,3 Megapixel	10-70x, 200x	USB 2.0	-	✓	400 nm UW + white	7+1	-	-	no	Emission passthrough filter 430 nm	-	-	-	€ 350 - € 550	
AM4113T-YFGW	1,3 Megapixel	10-70x, 200x	USB 2.0	-	✓	525 nm green + white	7+1	-	-	no	Emission passthrough filter 570 nm	-	-	-	€350,00 - €550,00	
AM4113T-RFYW	1,3 Megapixel	10-70x, 200x	USB 2.0	-	✓	575 nm yellow + white	7+1	-	-	no	Emission passthrough filter 610 nm	-	-	-	€350,00 - €550,00	
AM4113T-GFBW	1,3 Megapixel	10-70x, 200x	USB 2.0	-	✓	480 nm blue + white	7+1	-	-	no	Emission passthrough filter 510 nm	-	-	-	€350,00 - €550,00	AM4113T4-GFBW***
SPECIAL LIGHTING STROBOSCOPIC																
AM3713TB	VGA (640x480)	10-70x, 200x	USB 2.0	-	✓	white (stroboscopic)	8	-	-	IR cut-filter >650 nm	-	-	-	-	€200,00 - €350,00	
AM3715TB	VGA (640x480)	20-220x	USB 2.0	-	✓	white (stroboscopic)	8	-	-	IR cut-filter >650 nm	-	-	-	-	€350,00 - €550,00	
SPECIAL LIGHTING INFRARED																
AM413FIT	1,3 Megapixel	10-70x, 200x	USB 2.0	-	✓	850 nm IR	8	-	-	IR pass filter	Emission passthrough filter 850 nm	-	-	-	€200,00 - €350,00	AM413FI2T (with ~940 nm LED)
AD4113T-I2V	1,3 Megapixel	20-200x	USB 2.0	-	✓	390/400 nm UV + 940 nm IR	4+4	✓	-	no	-	-	-	-	€350,00 - €550,00	
AM7013M-FIT	5 Megapixel	10-70x, 200x	USB 2.0	-	✓	850 nm IR	8	-	-	IR pass filter	Emission passthrough filter 850 nm	✓	✓	-	€550,00 and above	
AD7013MTL-FI2	5 Megapixel	20-90x	USB 2.0	✓	✓	940 nm IR	8	✓	-	IR pass filter	Emission passthrough filter 850 nm	✓	✓	-	€550,00 and above	

* without UV cut filter
 ** with exchangeable caps
 *** with 400-470x magnification

BASIC – MOBILE RECORDER – DINOEYE EYEPIECES

MODEL	RESOLUTION	MAGNIFICATION	CONNECTIVITY	LONG WORKING DISTANCE	MEASUREMENT & CALIBRATION	TYPE OF LEDS	NUMBER OF LEDS	EXCHANGABLE CAPS	POLARIZER	IR FILTER	METAL HOUSING	ESD-SAFE	ADDITIONAL FEATURES	PRICE RANGE
BASIC														
AM2111	VGA 640x480	10-70x, 200x	USB 2.0	-	-	white	4	-	-	IR cut-filter >650 nm	-	-	-	€0 - €200,00
AM3113T	VGA 640x480	10-70x, 200x	USB 2.0	-	✓	white	8	-	-	IR cut-filter >650 nm	-	-	-	€0 - €200,00

MODEL	RESOLUTION	MAGNIFICATION	INTERFACE	LONG WORKING DISTANCE	MEASUREMENT & CALIBRATION	TYPE OF LEDS	NUMBER OF LEDS	EXCHANGABLE CAPS	POLARIZER	IR FILTER	METAL HOUSING	ESD-SAFE	PRICE RANGE
MOBILE RECORDER													
AMK4012T-D15	720x576 px	10-70x, 200x	TV (RCA) PAL	-	-	white	8	-	-	IR cut-filter >650 nm	-	-	> €550,00
AMK4012ZT-D15	720x576 px	10-70x, 200x	TV (RCA) PAL	-	-	white	8	-	✓	IR cut-filter >650 nm	-	-	> €550,00
AMK4012TL-D15	720x576 px	10-90x	TV (RCA) PAL	✓	-	white	8	-	-	IR cut-filter >650 nm	-	-	> €550,00

MODEL	RESOLUTION	BUILT-IN MAGNIFICATION	INTERFACE	MEASUREMENT & CALIBRATION	MOUNTING TYPE	OCULAR INNER DIAMETER	PRICE RANGE	ALSO AVAILABLE
DINOEYE EYEPIECES								
AM4023	1,3 Megapixel	✓	USB 2.0	✓	inside ocular/tube	23 mm	€150,00 - €250,00	
AM4023X	1,3 Megapixel	✓	USB 2.0	✓	inside ocular/tube	23, 30 & 30,5 mm	€150,00 - €250,00	AM422PX with TV (RCA) Connection
AM4023CT	1,3 Megapixel	-	USB 2.0	✓	C-Mount	n/a (C-Mount)	€150,00 - €250,00	C-Mount adapter to 25mm (F25mm)
AM423U	1,3 Megapixel	✓	USB 2.0	✓	over ocular/tube	up to 36 mm	€150,00 - €250,00	
DINOEYE EYEPIECES HR 5 MEGAPIXEL								
AM7023	5 Megapixel	✓	USB 2.0	✓	inside ocular/tube	23 mm	€250,00 - €500,00	
AM7023B	5 Megapixel	✓	USB 2.0	✓	inside ocular/tube	30 & 30,5 mm	€250,00 - €500,00	
AM7023CT	5 Megapixel	-	USB 2.0	✓	C-Mount	n/a (C-Mount)	€250,00 - €500,00	C-Mount adapter to 25mm (F25mm)

Dino-Lite
Digital Microscope
The Industry Standard

www.dino-lite.eu

version 2015/Q1 © Dino-Lite Europe/ IDCP B.V. Unauthorized use and/or duplication of this material without express and written permission from us is strictly prohibited.

Dino-Lite Europe is the sole European importer and master distributor for the Dino-Lite products. Dino-Lite products are sold by hundreds of local partners, please check www.dino-lite.eu/wheretobuy for the best reseller in your region.