



Racks and Accessories

Racks and Accessories



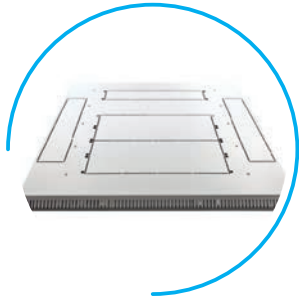
Among the core products of BKT ELEKTRONIK are metal IT cabinets and casings and related metal accessories. Cabinets are intended for passive and active network equipment with standard dimensions of 10", 19", 21". Selection of the right server, network or IT cabinet is of great importance as it will affect the cooling, fire extinguishing or even power supply systems and the functionality for the end user.

Contents

SRS IT cabinets	1-2
Ready To Assemble „Quick Rack“ Cabinets	3
SSJ One - piece cabinets	4
Floor Standing Server Cabinets	5-6
BKT 4DC	7-8
BKT 4DC Modular server cabinets	9-11
BKT 4DC cabinet accessories	12-15
ITC equipment frame racks	16
Assembly frame racks	17
TOP - One-piece hanging cabinets	18
STANDARD one - piece hanging cabinets	19
TOP two - piece hanging cabinets	20
STANDARD two - piece hanging cabinets	21
Accessories for standing and hanging 19" cabinets	22-28
Technologies	29-31

SRS IT cabinets

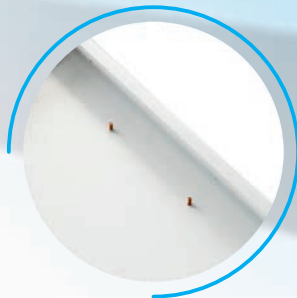
Basic version ensures optimum installation and configuration. Welded structure ensures safety of use even at maximum load. Used primarily as a network cabinet/distribution point.



Additional side cable grommets on the base and on the cabinet roof allowing perfect cable arrangement outside the 19" space (for cabinets with a width of 800mm).



Installation height numbering as a standard



Dedicated place on the cabinet base for provision of earth strip (not included in delivery)



All removable elements (doors, side and rear cover) have earth cords

Available dimensions

Type	Width (mm)	Depth (mm)	Height (mm)	Door front	Door rear	Index RAL7035
15U	600	600	780	2	6	SRS1560602611.1
		800	780	2	6	SRS1560802611.1
	800	800	780	2	6	SRS1580802611.1
18U	600	600	915	2	6	SRS1860602611.1
		800	915	2	6	SRS1860802611.1
	800	800	915	2	6	SRS1880802611.1
22U	600	600	1095	2	6	SRS2260602611.1
		800	1095	2	6	SRS2260802611.1
	800	800	1095	2	6	SRS2280802611.1
24U	600	600	1210	2	6	SRS2460602611.1
		800	1210	2	6	SRS2460802611.1
	800	800	1210	2	6	SRS2480802611.1
27U	600	600	1315	2	6	SRS2760602611.1
		800	1315	2	6	SRS2780802611.1
	800	800	1315	2	6	SRS2780802611.1

Type	Width (mm)	Depth (mm)	Height (mm)	Door front	Door rear	Index RAL7035
32U	600	600	1535	2	6	SRS3260602611.1
		800	1535	2	6	SRS3260802611.1
	800	800	1535	2	6	SRS3280802611.1
42U	600	600	1980	1	6	SRS4260601611.1
		600	1980	2	6	SRS4260602611.1
		800	1980	1	6	SRS4260801611.1
		800	1980	2	6	SRS4260802611.1
	800	800	1980	1	6	SRS4280801611.1
		800	1980	2	6	SRS4280802611.1
45U	600	600	2120	2	6	SRS4560602611.1
		800	2120	2	6	SRS4560802611.1
	800	800	2120	2	6	SRS4580802611.1
47U	600	600	2186	2	6	SRS4760602611.1
		800	2186	2	6	SRS4760802611.1
	800	800	2186	2	6	SRS4780802611.1

* other configurations available on request

Basic parameters:

- Material: steel sheet
- Front door: sheet metal/glass or full glazing
- Rear door: shortened sheet metal wall
- Side walls: steel sheet
- Load capacity: 600 kg
- IP rating: 20
- Colour: RAL7035

Maximum spacing of mounting sections depending on cabinet depth:

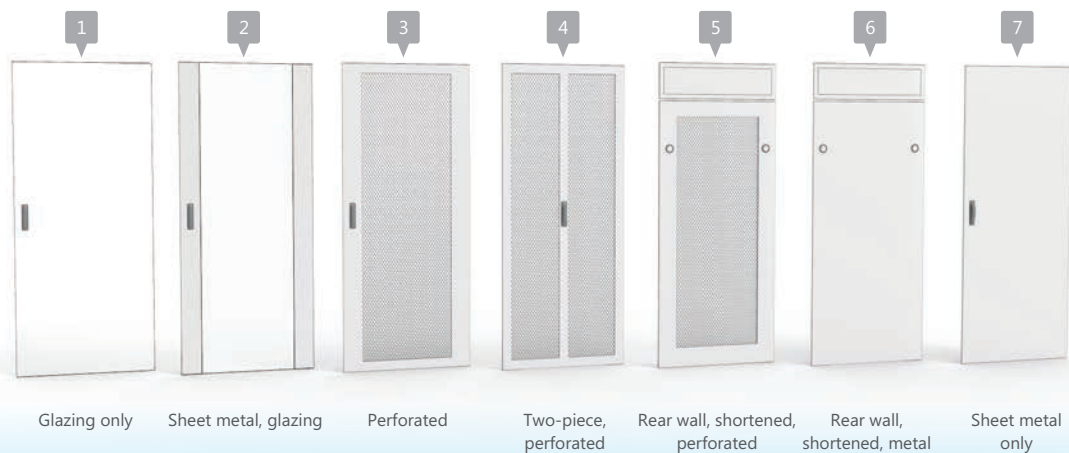
- cabinets with a depth of 600 mm - maximum spacing: 472 mm
- cabinets with a depth of 800 mm - maximum spacing: 672 mm
- cabinets with a depth of 900 mm - maximum spacing: 772 mm

Regulatory compliance:

EIA-310-D, IEC 60297-1, IEC 60297-2, ROHS

Included in delivery:

- brush strip
- set of M6 assembly bolts (16 pcs)
- set of floor-leveler feet
- 1,5 m edge sealing
- 2 pairs of 19" mounting sections



Ready To Assemble „Quick Rack“ Cabinets



Ready to assemble cabinets are suitable for spaces with limited area such as basements or attics.

Basic parameters:

- Material: steel sheet
- Front door: sheet metal/glass (2)
- Rear door: sheet metal wall (6)
- Side walls: steel sheet
- Load capacity: 400 kg
- IP rating: 20
- Colour: RAL 7035

Maximum spacing of mounting sections depending on cabinet depth:

- cabinets with a depth of 600 mm - maximum spacing: 472 mm
- cabinets with a depth of 800 mm - maximum spacing: 672 mm

Regulatory compliance:

EIA-310-D, IEC 60297-1, IEC 60297-2, ROHS

Available dimensions

Type	Width (mm)	Depth (mm)	Height (mm)	Door front	Door rear	Index RAL7035 assembled	Index RAL7035 ready to assemble
42U	600	600	1980	2	6	QR42606026.1	QR42606026.1Q
		800	1980	2	6	QR42608026.1	QR42608026.1Q
	800	800	1980	2	6	QR42808026.1	QR42808026.1Q



Basic parameters:

- Material: steel sheet
- Front door: sheet metal/glass
- Rear door: shortened wall, sheet metal
- Side walls: steel sheet
- Load capacity: 200 kg
- IP rating: 20
- Colour: RAL 7035

Regulatory compliance:

EIA-310-D, IEC 60297-1, IEC 60297-2, ROHS

Included in delivery:

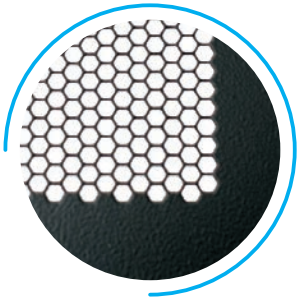
- brush strip
- set of M6 assembly bolts (16 pcs)
- set of floor - leveller feet
- 1,5 m edge sealing
- 2 pairs of mounting sections

Available dimensions

Type	Width (mm)	Depth (mm)	Height (mm)	Door front	Door rear	Index RAL7035
24U	600	600	1210	2	6	11005661.1
		800	1210	2	6	11005681.1
	800	800	1210	2	6	11005881.1

Floor Standing Server Cabinets

Simple design combined with high quality and functionality makes the cabinet very user-friendly. Latest technology employed in production results in the optimum parameters of stiffness, airiness (80%) or load capacity (1000 kg). Cabinets come with welded or modular versions. The wide type range of the cabinets and numerous accessories allow for any given configuration.



Perforated mesh with 80% airiness ensuring optimum air exchange in the cabinet



Door protected with 3 - point locking system ensuring equipment safety



Additional side cable entries in base and roof allow for perfect organization of cabling outside the 19" area (in 800 mm wide cabinets).



Frame and mounting sections structure with a load capacity of 1000 kg as a standard.

Floor Standing Server Cabinets

Available dimensions

Type	Width (mm)	Depth (mm)	Height (mm)	Door front	Door rear	Index RAL7035	Index RAL7021
42U	600	1000	1980	3	5	SSRS4260103511.1	SSRS4260103511.2
		1000	1980	3	3	SSRS4260103311.1	SSRS4260103311.2
		1200	1980	3	5	SSRS4260123511.1	SSRS4260123511.2
		1200	1980	3	3	SSRS4260123311.1	SSRS4260123311.2
	800	1000	1980	3	5	SSRS4280103511.1	SSRS4280103511.2
		1000	1980	3	3	SSRS4280103311.1	SSRS4280103311.2
		1000	1980	4	4	SSRS4280104411.1	SSRS4280104411.2
		1000	1980	3	4	SSRS4280103411.1	SSRS4280103411.2
45U	600	1000	2120	3	5	SSRS4560103511.1	SSRS4560103511.2
		1000	2120	3	3	SSRS4560103311.1	SSRS4560103311.2
		1200	2120	3	5	SSRS4560123511.1	SSRS4560123511.2
		1200	2120	3	3	SSRS4560123311.1	SSRS4560123311.2
	800	1000	2120	3	5	SSRS4580103511.1	SSRS4580103511.2
		1000	2120	3	3	SSRS4580103311.1	SSRS4580103311.2
		1000	2120	4	4	SSRS4580104411.1	SSRS4580104411.2
		1000	2120	3	4	SSRS4580103411.1	SSRS4580103411.2
47U	600	1000	2186	3	5	SSRS4760103511.1	SSRS4760103511.2
		1000	2186	3	3	SSRS4760103311.1	SSRS4760103311.2
		1200	2186	3	5	SSRS4760123511.1	SSRS4760123511.2
		1200	2186	3	3	SSRS4760123311.1	SSRS4760123311.2
	800	1000	2186	3	5	SSRS4780103511.1	SSRS4780103511.2
		1000	2186	3	3	SSRS4780103311.1	SSRS4780103311.2
		1000	2186	3	5	SSRS4780123511.1	SSRS4780123511.2
		1000	2186	3	3	SSRS4780123311.1	SSRS4780123311.2

Basic parameters

- Material: steel sheet
- Front door: one - piece perforated or two - piece perforated
- Rear door: one - piece perforated, two - piece perforated, perforated shortened wall
- Side walls: steel sheet
- Load capacity: 1000 kg
- IP rating: 20
- Colour: light grey RAL 7035 or black RAL 7021

Maximum spacing of mounting sections depending on cabinet depth:

- cabinets with a depth of 1000 mm - maximum spacing: 872 mm
- cabinets with a depth of 1200 mm - maximum spacing: 1072 mm

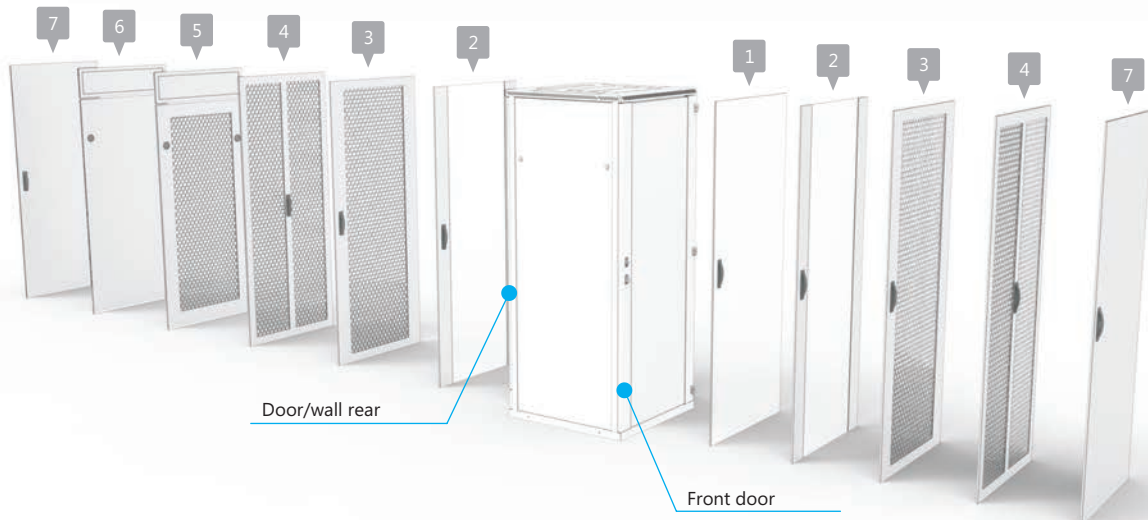
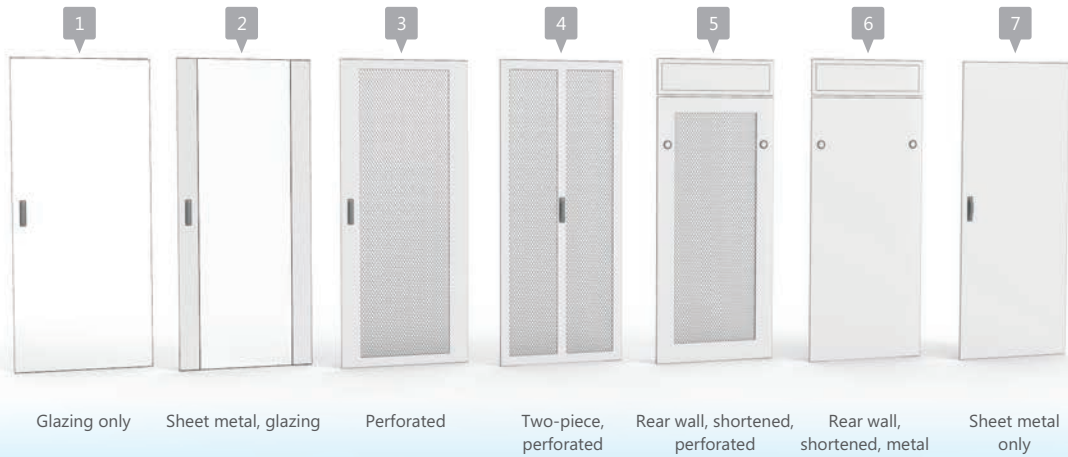
Regulatory compliance:

EIA-310-D, IEC 60297-1, IEC 60297-2, ROHS

Included in delivery:

- brush strip
- set of M6 assembly bolts (16 pcs)
- set of floor - leveller feet
- 1,5 m edge sealing
- 2 pairs of mounting sections

* other configurations available on request



BKT 4DC

BKT 4DC cabinets are an ideal solution for the demanding Data Centres where functionality, ease of installation and safety play a key role. They will meet expectations of the most demanding users seeking quality and modern design. BKT 4DC cabinet have all the characteristics of the top quality product.



Stability

- Cabinet frame allowing for carrying a weight capacity of 1500 kg
- Possibility of mounting castors with built in leveling feet and weight capacity of 1000 kg



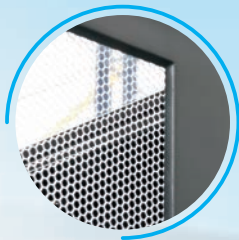
Easy installation

- Tool - free mounting of side walls
- Tool - free mounting/demounting of doors
- Tool - free mounting of 19" rails
- Tool - free configuration of the base



Safety

- Universal closing system with possibility of utilizing electromagnetic locks
- Hinges mounted internally
- 4 - point lock as standard



Airiness

- Doors with optimal perforated surface of 82% for more efficient cooling while maintaining appropriate stability
- Additional elements ensuring appropriate closing off of cold/hot areas in cabinet



Flexibility

- Suitable for mounting PDUs without interfering in the 19" area (even in 600 mm wide cabinets)
- Possibility of mounting 19" rails asymmetrically as standard (800 mm wide cabinets)
- 19" or 21" rail spacing when utilizing standard rails in 800 mm wide cabinets



Available dimensions

Type	Width (mm)	Depth (mm)	Height (mm)	Door front	Door rear	Index RAL9005
42U	600	1000	1980	3	4	S4DC4260103411.3
		1000	1980	3	3	S4DC4260103311.3
		1200	1980	3	4	S4DC4260123411.3
		1200	1980	3	3	S4DC4260123311.3
	800	1000	1980	3	4	S4DC4280103411.3
		1000	1980	3	3	S4DC4280103311.3
		1200	1980	3	4	S4DC4280123411.3
		1200	1980	3	3	S4DC4280123311.3
45U	600	1000	2120	3	4	S4DC4560103411.3
		1000	2120	3	3	S4DC4560103311.3
		1200	2120	3	4	S4DC4560123411.3
		1200	2120	3	3	S4DC4560123311.3
	800	1000	2120	3	4	S4DC4580103411.3
		1000	2120	3	3	S4DC4580103311.3
		1200	2120	3	4	S4DC4580123411.3
		1200	2120	3	3	S4DC4580123311.3
47U	600	1000	2186	3	4	S4DC4760103411.3
		1000	2186	3	3	S4DC4760103311.3
		1200	2186	3	4	S4DC4760123411.3
		1200	2186	3	3	S4DC4760123311.3
	800	1000	2186	3	4	S4DC4780103411.3
		1000	2186	3	3	S4DC4780103311.3
		1200	2186	3	4	S4DC4780123411.3
		1200	2186	3	3	S4DC4780123311.3

Basic parameters

- steel sheet
- Front door: one - piece, perforated or two-piece, perforated
- Rear door: one - piece, perforated or two-piece, perforated
- Side walls: steel sheet
- Load capacity: 1500 kg
- IP rating: 20
- Colour: black RAL 9005

Maximum spacing of mounting sections depending on cabinet depth:

- cabinets with a depth of 1000 mm - maximum spacing: 872 mm
- cabinets with a depth of 1200 mm - maximum spacing: 1072 mm

Regulatory compliance:

EIA-310-D, IEC 60297-1, IEC 60297-2, ROHS

Included in delivery:

- brush strip
- set of M6 assembly bolts (16 pcs)
- set of floor-leveler feet
- 1,5 m edge sealing



BKT 4DC Modular server cabinets

To provide the best environment for IT equipment, cold/hot aisles are used which prevent the mixing of cold and hot air. This solution allows air conditioning equipment and cold generated by such equipment to be managed more efficiently. BKT 4DC modular cabinets facilitate the work of air conditioning systems in data centres.

Raised roof with possibility of mounting additional external sensors

Threshold - free closing guaranteeing appropriate door stability

Synchronized opening/closing of doors



Mechanical or automatic door closing system

BKT 4DC Modular server cabinets

Doors for modular cabinets:

- Suitable for BKT 4DC modular server cabinets
- Ensure proper separation of hot and cold air
- Equipped with hardened glass and a single - point lock locked with a button as a standard
- Door guide system allowing simultaneous opening of both leaves (movement of one leaf causes the other to be automatically opened)
- Without a guiding threshold between the cabinets
- Mechanical opening as a standard (version with automatic opening at the request)



Available dimensions

Type	Name	Width (mm)	Depth (mm)	Height (mm)	Index RAL9005
42U	Mechanical doors BKT 4DC	1200	70	2100	111SA942121.3
45U	Mechanical doors BKT 4DC	1200	70	2240	111SA945121.3
47U	Mechanical doors BKT 4DC	1200	70	2310	111SA947121.3
42U	Automatic doors BKT 4DC 42U	1200	70	2100	111SA942120.3
45U	Automatic doors BKT 4DC 42U	1200	70	2240	111SA945120.3
47U	Automatic doors BKT 4DC 42U	1200	70	2310	111SA947120.3

Modular roofs:

- Intended for BKT 4DC server cabinets
- Equipped with a plastic transparent element - tool-free assembly using snap-fits
- Good closure of space between the cabinets
- Sealing provided
- Additional opening for cables, sensors and cameras
- Two standard versions available (straight and elevated)



Available dimensions

Name	Width (mm)	Depth (mm)	Height (mm)	Index RAL9005
Modular roof BKT 4DC 600 mm	1200	600	20	111SA800601.3
Modular roof BKT 4DC 800 mm	1200	800	20	111SA800801.3
Modular roof BKT 4DC 600 mm - raised	1200	600	150	111SA800602.3
Modular roof BKT 4DC 800 mm - raised	1200	800	150	111SA800802.3
Outmost modular roof BKT 4DC 600 mm - raised	1200	600	150	111SA800603.3
Outmost modular roof BKT 4DC 800 mm - raised	1200	800	150	111SA800803.3

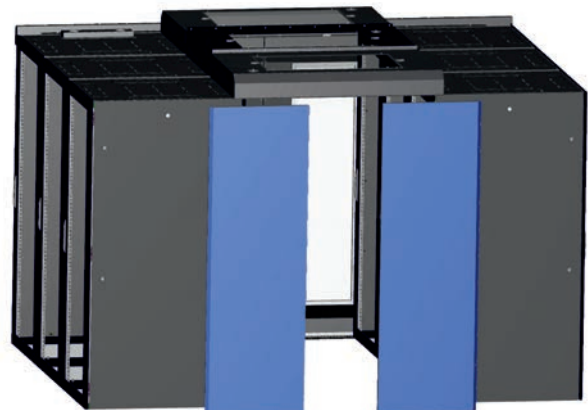


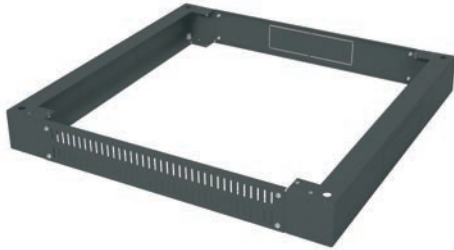
Rear walls for BKT 4DC modular cabinets:

- Intended for permanent closure of hot/cold zone for BKT 4DC modular server cabinets
- Ensure proper separation of hot and cold air
- Structure allows easy opening of cabinets adjoining the wall

Available dimensions

Type	Name	Width (mm)	Depth (mm)	Height (mm)	Index RAL9005
42U	Rear wall	1200	70	2100	111SA042121.3
45U	Rear wall	1200	70	2240	111SA045121.3
47U	Rear wall	1200	70	2310	111SA047121.3





Base

- Intended for assembly with BKT 4DC cabinets
- Made of steel sheet RAL 9005
- Rear cover and side modules provided with large holes (250 x 70 mm) for easy routing of cable bundles (base provided with one brush grommets as a standard)
- Perforated front cover
- Floor - leveller feet (included in delivery)
- Load capacity up to 1500 kg

Name	Index RAL9005
Base BKT 4DC 100 mm for cabinets width 800 mm, depth 800 mm	110SA118080.3
Base BKT 4DC 100 mm for cabinets width 600 mm, depth 1000 mm	110SA116010.3
Base BKT 4DC 100 mm for cabinets width 800 mm, depth 1000 mm	110SA118010.3
Base BKT 4DC 100 mm for cabinets width 600 mm, depth 1200 mm	110SA116012.3
Base BKT 4DC 100 mm for cabinets width 800 mm, depth 1200 mm	110SA118012.3



Cover for cabinets with a width of 800 mm provided with 3 x 1U holes

- Made of steel sheet RAL 9005
- Ensures proper separation of cabinet fronts
- Provided with three 1U holes for vertical installation of additional equipment outside the 19" space and a brush grommet for closure of the remaining free space
- Use of brush grommet allows cable bundles to be routed from the front towards the inside of the cabinet
- Sold separately

Type	Name	Index RAL9005
42U	Vertical cover BKT 4DC, with holes 3 x 1U for cabinets with a width of 800 mm (1 pc)	111SA242800.3
45U	Vertical cover BKT 4DC, with holes 3 x 1U for cabinets with a width of 800 mm (1 pc)	111SA245800.3
47U	Vertical cover BKT 4DC, with holes 3 x 1U for cabinets with a width of 800 mm (1 pc)	111SA247800.33



Cover for cabinets with a width of 600 mm

- Made of steel sheet RAL 9005
- Ensures proper separation of cabinet fronts
- Provided with a brush grommet for closure of the space between the 19" mounting sections and the side wall
- Use of brush grommets allows routing of cable bundles from the front towards the inside of the cabinet
- Sold separately

Type	Name	Index RAL9005
42U	Vertical cover BKT 4DC, for cabinets width 600mm (1 pc)	111SA242600.3
45U	Vertical cover BKT 4DC, for cabinets width 600mm (1 pc)	111SA245600.3
47U	Vertical cover BKT 4DC, for cabinets width 600mm (1 pc)	111SA247600.3



Upper and lower air duct cover

- Made of steel sheet RAL 9005
- Ensures proper separation of cabinet fronts
- Provided with a brush grommet for closure of the space above and below 19" mounting sections
- Brush grommet allows cable bundles to be routed from the front towards the inside of the cabinet
- Sold separately

Name	Index RAL9005
Air duct brush cover BKT 4DC upper/lower	111SA200600.3



Vertical cable organiser for cabinets with a width of 800 mm

- Made of steel sheet RAL 9005
- Proper cable separation from the cabinet front panels
- For management, routing and concealment of copper and optical cable bundles
- For easy handling, the organiser consists of 3 parts, snap-fitted front covers
- Sold separately

Type	Name	Index RAL9005
42U	Vertical organiser BKT 4DC, for cabinets with a width of 800 mm (1 pc)	111SA242801.3
45U	Vertical organiser BKT 4DC, for cabinets with a width of 800 mm (1 pc)	111SA245801.3
47U	Vertical organiser BKT 4DC, for cabinets with a width of 800 mm (1 pc)	111SA247801.3



Vertical cable ladder

- Made from sheet steel with aluminum and zinc coating
- For vertical management and routing of copper and optical cable bundles
- Numerous holes for provision of additional cable organisation elements (cable holders, cable ties)
- Sold separately

Type	Name	Index
42U	Vertical cable ladder BKT 4DC (1 pc)	111SA242002.3
45U	Vertical cable ladder BKT 4DC (1 pc)	111SA245002.3
47U	Vertical cable ladder BKT 4DC (1 pc)	111SA247002.3



Blank panel - tool-free mounting

- Made of steel sheet RAL 9005
- Suitable for blanking free segments in the 19" area, providing appropriate separation of cold/hot air masses
- Easy mounting through the use of plastic latches

Type	Name	Index RAL9005
1U	Blank panel BKT 1U - tool - free mounting	11141101.3
2U	Blank panel BKT 2U - tool - free mounting	11141201.3



Horizontal cable ladder

- Made from sheet steel with aluminum and zinc coating
- For horizontal management and routing of copper and optical cable bundles
- Numerous holes for provision of additional cable organisation elements (cable holders, cable ties)
- Sold separately

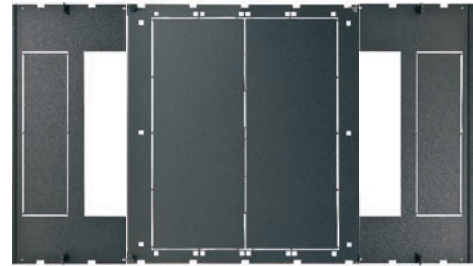
Name	Index
Horizontal cable ladder BKT 4DC, 1000 (1 pc)	111SA200002.3
Horizontal cable ladder BKT 4DC, 1200 (1 pc)	111SA200003.3



Holders for power strips

- Made of steel sheet RAL 9005
- Intended for placement of power strips in cabinets with a width of 600 mm and 800 mm;
- Holes suitable for both tool and tool - free assembly (clips)
- Sold in sets (2 items in a set)

Name	Index
Power strip holder for cabinets with a width of 600 mm BKT 4DC	111SA200011.3
Power strip holder for cabinets with a width of 800 mm BKT 4DC	111SA200012.3



Cabinet base

- Made of steel sheet RAL 9005
- Provides extra protection for the cabinet base against dust
- Comprises three elements: two end elements with brush grommets and the central element allowing installation of a ventilation panel
- Can be joined to the cabinet frame without using any tools

Name	Index RAL9005
Cabinet base BKT 4DC 800 x 800 mm	110SA128080.3
Cabinet base BKT 4DC 600 x 1000 mm	110SA126010.3
Cabinet base BKT 4DC 600 x 1200 mm	110SA126012.3
Cabinet base BKT 4DC 800 x 1000 mm	110SA128010.3
Cabinet base BKT 4DC 800 x 1200 mm	110SA128012.3



Lock cylinder

- Replaces standard button cylinder
- Complete set includes cylinder, casing and 2 keys (key code 13333)

Name	Index
Lock cylinder for cabinets BKT 4DC with key 1333 (1 pc)	111SA200031.3



Snap nut for frame sections

- For installation of additional elements such as cable organisers or power strip holders on frame sections of BKT 4DC cabinets
- 10 pcs in a set

Name	Index
M6 snap nut - section of BKT 4DC cabinets (10 pc)	111SA200060.3



Casters with a floor-leveller foot

- Casters with a floor - leveller foot as a standard
- Load capacity of 1000 kg

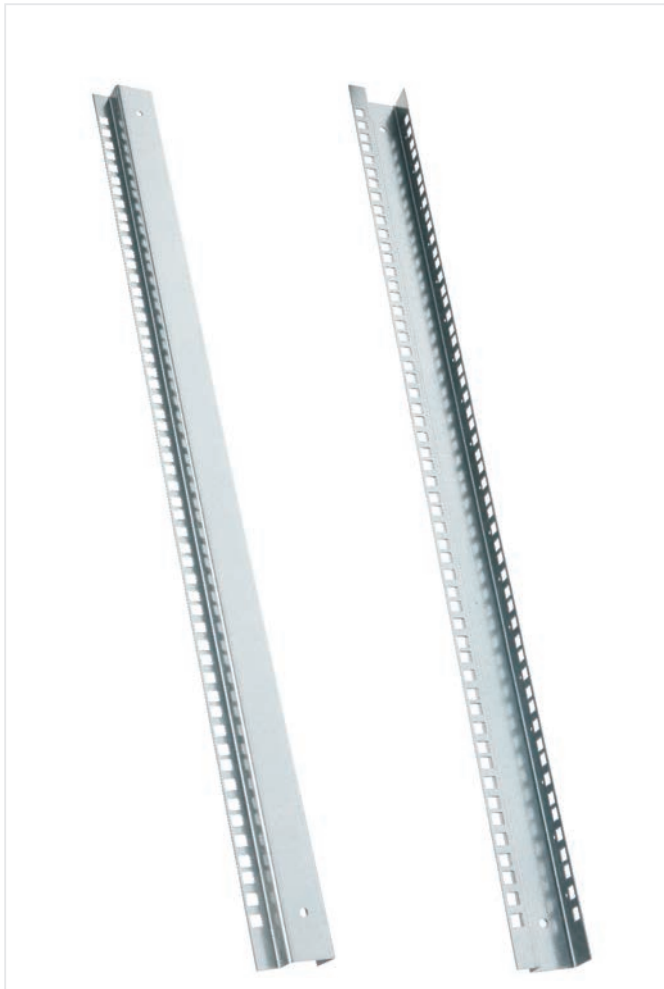
Name	Index
Casters for BKT 4DC cabinets - with a floor-leveller foot (load capacity - 1000 kg)	111SA200080.3



Cabinet joining set

- Made of steel sheet RAL 9005
- For joining adjacent BKT 4DC cabinets
- Easy joining from the front and rear side of cabinets (joining of equipped cabinets possible)
- Set includes elements required for joining together two cabinets

Name	Index
Set for joining BKT 4DC cabinets (set)	111SA200021.3



Mounting section

- Made from sheet steel with aluminum and zinc coating
- Suitable for tool - free assembly
- Permanent marking of U height

Type	Name	Index
42U	Mounting section BKT 4DC 42U (2 pcs)	111SA200042.3
45U	Mounting section BKT 4DC 45U (2 pcs)	111SA200045.3
47U	Mounting section BKT 4DC 47U (2 pcs)	111SA200047.3



Central mounting section

- Suitable for tool - free assembly
- Installed between standard sections, allows extra fastening for installed equipment

Type	Name	Index
42U	Central mounting section BKT 4DC 42U (2 pcs)	111SA200142.3
45U	Central mounting section BKT 4DC 45U (2 pcs)	111SA200145.3
47U	Central mounting section BKT 4DC 47U (2 pcs)	111SA200147.3

Intended for installation of standard 19" network equipment in properly secured and air conditioned rooms. Stands may have one (simplex) or two (duplex) assembly planes. Casters provided optionally.



Basic parameters:

Material: steel sheet
 Section count:
 • front (Simplex)
 • front and rear (Duplex)
 Load capacity:
 • Simplex 100 kg
 • Duplex 200 kg
 Colour: RAL 7035

Maximum spacing of mounting sections for duplex stands:

- Maximum spacing 472 mm

Regulatory compliance:

EIA-310-D, IEC 60297-1, IEC 60297-2, ROHS

Available dimensions

Type	Width (mm)	Depth (mm)	Height (mm)	Weight (kg)	Load capacity (kg)	Index
42U Simplex	600	600	1985	15	100	11156691.1
42U Duplex	600	600	1985	19	200	11156692.1

Basic parameters:

Material: steel sheet
 Section count:
 • front (Simplex)
 • front and rear (Duplex)
 Load capacity:
 • Simplex 100 kg
 • Duplex 200 kg
 Colour: RAL 7021 (base) RAL 7035 (mounting sections)

The frame profiles (front and rear) are depth adjustable to:

- 370mm
- 470mm
- 580mm

Regulatory compliance:

EIA-310-D, IEC 60297-1, IEC 60297-2, ROHS

Available dimensions

Type	Width (mm)	Depth (mm)	Height (mm)	Weight (kg)	Load capacity (kg)	Index
32U Simplex	550	710	1540	29,3	100	11150031
32U Duplex	550	710	1540	43,5	200	11150041
42U Simplex	550	710	1985	32,8	100	11150011
42U Duplex	550	710	1985	50,5	200	11150021
45U Duplex	550	710	2120	56,2	200	11150091

Mini cabinets 10"



Basic parameters:

- Material: steel sheet
- Front door: full metal
- Rear door: steel wall
- Side walls: steel sheet
- IP rating: 20
- Colour: RAL 7035

Regulatory compliance:

ROHS

In delivery with a complete cabinet:

- Key to door - 2 pcs.

Available dimensions

Type	Width (mm)	Depth (mm)	Height (mm)	Weight (kg)	Load capacity (kg)	Index
6U	305	250	324	6	20	11062302.1

Basic parameters:

- Material: steel sheet
- Front door: metal/glass
- Rear door: steel wall
- Side walls: steel sheet
- IP rating: 20
- Colour: RAL 7035

Regulatory compliance:

ROHS

In delivery with a complete cabinet:

- Key to door - 2 pcs.

Available dimensions

Typ	Width (mm)	Depth (mm)	Height (mm)	Weight (kg)	Load capacity (kg)	Index
4U	300	300	240	3,9	20	11061301.1
6U	300	300	330	4,8	20	11062301.1
9U	300	300	465	6,1	20	11063301.1



Remaining assortment to cabinets 10"

Type	Name	Index RAL7035
1U	Patch-Panel 10" 8 x RJ45	11120081
1U	Patch-Panel 8 x SC Duplex	11120031
1U	Patch-Panel 12 x ST	11120041
1U	Shelf 10"	11110120
1U	Blank panel 10"	11110071

TOP - One-piece hanging cabinets

The basic hanging cabinet model for indoor use. Thanks to the welded structure, the cabinets are safe even with maximum loads. At the bottom, on the top and at the rear of the cabinets there are holes (250x70mm) for cable bundles. Additionally, there are two holes on the top and two holes at the bottom for ventilation units. Removable side covers with single point lock provide an easy access to the inside of the cabinet.



Basic parameters:

- Material: steel sheet
- Front door: sheet metal/glass
- Back door: rear wall of cabinet mounted permanently
- Side walls: steel sheet
- Load: 50 kg
- IP Rating: 20
- Colour: RAL 7035

Regulatory compliance:

EIA-310-D, IEC 60297-1, IEC 60297-2, ROHS

Included in delivery:

- 1 brush strip
- set of M6 assembly bolts (16 pcs)
- 2 front door keys

Maximum spacing of mounting sections depending on cabinet depth:

- cabinets 400 mm in depth - maximum spacing 335 mm
- cabinets 500 mm in depth - maximum spacing 435 mm
- cabinets 600 mm in depth - maximum spacing 535 mm

Available dimensions:

Type	Width (mm)	Depth (mm)	Height (mm)	Weight (kg)	Load capacity (kg)	Index
4U	600	400	240	15,7	50	11031401.1V
6U	600	400	330	19,1	50	11032401.1V
9U	600	400	464	22,1	50	11033401.1V
12U	600	400	597	25,9	50	11035401.1V
15U	600	400	730	29,7	50	11036401.1V
18U	600	400	860	33,5	50	11037401.1V
21U	600	400	997	37,4	50	11039401.1V
6U	600	500	330	19,5	50	11032501.1V
9U	600	500	465	22,5	50	11033501.1V
12U	600	500	600	26,3	50	11035501.1V
15U	600	500	730	30,1	50	11036501.1V
18U	600	500	865	33,9	50	11037501.1V
21U	600	500	997	37,8	50	11039501.1V
9U	600	600	465	22,9	50	11033601.1V
12U	600	600	600	26,7	50	11035601.1V
15U	600	600	730	30,5	50	11036601.1V
18U	600	600	864	34,3	50	11037601.1V
21U	600	600	997	38,2	50	11039601.1V



STANDARD one - piece hanging cabinets

Hanging cabinets for indoor use. Thanks to the welded structure, the cabinets are safe even with maximum loads. At the bottom and on the top of the cabinets there are holes (250 x 70mm) for cable bundles. Additionally, there is one hole on the top and one at the bottom for ventilation units. The cabinet has a rear wall.



Basic parameters:

- Material: steel sheet
- Front door: glass
- Back door: rear steel wall with aluminum and zinc coating
- Load: 40-50 kg
- IP Rating: 20
- Colour: RAL 7035

Maximum spacing of mounting sections depending on cabinet depth:

- cabinets 400 mm in depth - maximum spacing 335 mm

Regulatory compliance:

EIA-310-D, IEC 60297-1, IEC 60297-2, ROHS

Available dimensions:

Type	Width (mm)	Depth (mm)	Height (mm)	Weight (kg)	Load capacity (kg)	Index glass door	Index metal door
4U	560	400	285	14,2	40-50	11081647.1V	11081642.1V
6U	560	400	375	16,1	40-50	11082647.1V	11082642.1V
9U	560	400	510	18,4	40-50	11083647.1V	11083642.1V
12U	560	400	640	21,4	40-50	11085647.1V	11085642.1V

TOP two - piece hanging cabinets

The basic hanging cabinets for indoor use. Thanks to the welded structure, the cabinets are safe even with maximum loads. Two-piece structure allows an easy access from the rear to the installed devices. At the bottom and on the top of the cabinets there are holes (250 x 70mm) for cable bundles. The rear part that is mounted to the wall has also two holes for cable bundles (at the top and bottom). Additionally, there are two holes on the top and two holes at the bottom for ventilation units.



Basic parameters:

- Material: steel sheet
- Front door: sheet metal/glass
- Back door: rear metal pivoting wall
- Load: 30-50 kg
- IP Rating: 20
- Colour: RAL 7035

Delivery includes:

- 1 brush strip
- set of M6 assembly bolts (16 pcs)
- 2 front door keys

Maximum spacing of mounting sections depending on cabinet depth:

- cabinets 500 mm in depth - maximum spacing 435 mm
- cabinets 600 mm in depth - maximum spacing 535 mm

Compliance with:

EIA-310-D, IEC 60297-1, IEC 60297-2, ROHS

Available dimensions:

Type	Width (mm)	Depth (mm)	Height (mm)	Weight (kg)	Load capacity (kg)	Index
6U	600	500	330	19,1	40	11042501.1V
9U	600	500	465	22,1	40	11043501.1V
12U	600	500	600	25,9	40	11045501.1V
15U	600	500	730	29,7	50	11046501.1V
18U	600	500	860	33,5	50	11047501.1V
21U	600	500	997	37,4	50	11049501.1V
4U	600	600	240	16,1	30	11041601.1V
6U	600	600	330	19,5	40	11042601.1V
9U	600	600	465	22,5	40	11043601.1V
12U	600	600	600	26,3	40	11045601.1V
15U	600	600	730	30,1	50	11046601.1V
18U	600	600	860	33,9	50	11047601.1V
21U	600	600	997	37,8	50	11049601.1V



STANDARD two - piece hanging cabinets

Hanging cabinets for indoor use. Thanks to the welded structure, the cabinets are safe even with maximum loads. Two - piece structure allows an easy access from the rear to the installed devices. At the bottom and on the top of the cabinets there are holes (250 x 70mm) for cable bundles. The rear part that is mounted to the wall has also two holes for cable bundles (at the top and bottom). Additionally, there are two holes on the top and two holes at the bottom for ventilation units.



Basic parameters:

- Material: steel sheet
- Front door: sheet metal/glass
- Back door: rear metal pivoting wall
- Load: 30 - 50 kg
- IP Rating: 20
- Colour: RAL 7035

Maximum spacing of mounting sections depending on cabinet depth:

⌘ cabinets 500 mm in depth - maximum spacing 435 mm.

Available dimensions:

Type	Width (mm)	Depth (mm)	Height (mm)	Weight (kg)	Load capacity (kg)	Index glass door	Index metal door
4U	560	500	285	15,1	50	11081657.1V	11081652.1V
6U	560	500	375	16,8	50	11082657.1V	11082652.1V
9U	560	500	510	19,2	50	11083657.1V	11083652.1V
12U	560	500	640	22,1	50	11085657.1V	11085652.1V



19" Ventilation panels

- For mounting at the bottom and top of the cabinets and on the 19" mounting sections of the cabinets
- Equipped with surge protection and thermostat that allows temperature regulation from 0 - 60°C
- Universal structure allows mounting the panels as inlet or outlet vents by proper screwing the case to the fixing frame
- The ventilation panel may be mounted at the bottom of the cabinet along with the air filtration panel. This provides filtration of the air that is sucked into the cabinet.
- Enclosure - made from sheet steel, powder painted in RAL 7035 - structural

Type	Width (mm)	Depth (mm)	Height (mm)	Weight (kg)	Efficiency (m³/h)	Index RAL7035	Index RAL7021
two fans	482	176	45,5	3,5	324 - 390	24011220.DRS	24011220.DRC
four fans	482	352	45,5	6,6	648 - 780	24011420.DRS	24011420.DRC
six fans	482	352	45,5	7,7	972 - 1170	24011620.DRS	24011620.DRC



Filtration panel

- For mounting with top/bottom ventilation panel in 19" standing cabinets
- Provides filtration of the air that is sucked into the cabinet
- You can mount the filtration panel yourself (it is necessary to use a perforated; blank panel to prevent the fiber filter from falling out).

Type	Width (mm)	Depth (mm)	Thickness (mm)	Weight (kg)	Index
4U	610	610	15	6,5	11140765
8U	495	495	15	2,4	11140775



Single - fan ventilation unit

- For mounting on the top or bottom of all 19" hanging cabinets
- The product includes power cable, earthing cable and screws for mounting the fan
- Power: AC 230 V, 50 Hz

Type	Index
Single - fan ventilation unit	24011100



Perforated blank plate

- Made of steel sheet
- Powder coated, RAL 7035 colour (light grey)
- Use:
 - extending ventilation area of cabinets
 - protection against fiber filter falling out from filtration panel

Type	Width (mm)	Depth (mm)	Thickness (mm)	Weight (kg)	Index
4U	610	610	1,5	6,5	11140781
8U	495	495	1,5	2,4	11140791



Thermostat BKT

Thermostat BKT TRT-10A230VAC-NO, -10°C/+80°C for ventilation units, BKT 19"

Type	Index
Thermostat BKT TRT-10A230VAC-NO, -10°C/+80°C for ventilation units, BKT 19"	10352125

Accessories for standing and hanging 19" cabinets

Organization of cables



Metal cable organisers

- Keep cable bundles tidy and organised
- Material: steel sheet
- Standard: 19"
- Height: 1U or 2U

Type	Number of holders	Index RAL7035	Index RAL7021
1U	4	11140221	11140592
2U	5	11140861	11140862



Cable organisers with plastic holders

- Keep cable bundles tidy and organised
- Material: plastic
- Standard: 19"
- Height: 1U

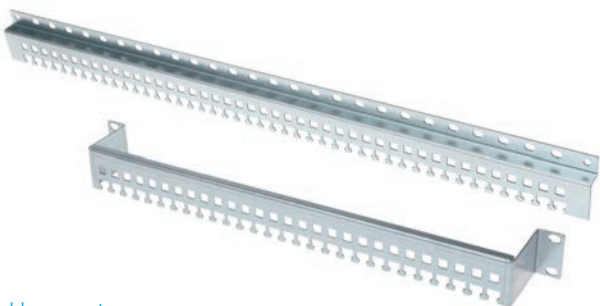
Type	Number of holders	Index RAL7035	Index RAL7021
1U	5	11140130	11140935



Metal cable organisers with grommets

- Material: steel sheet
- Standard: 19"
- Height: 1U lub 2U

Type	Width (mm)	Depth (mm)	Height (mm)	Weight (kg)	Index RAL7035	Index RAL7021
1U	482	45	43	0,63	11140221.1	11140221.3
2U	482	77,6	88	1,43	11140861.1	11140861.3



Cable supports

- Additional elements for tidy cable bundles installation
- Material: zinc - galvanized steel sheet

Type	Width (mm)	Depth (mm)	Height (mm)	Weight (kg)	Index
19" rear holder	482	60	60	0,38	11140175
Side holder 600	500	18	60	0,45	11140185
Side holder 800	700	18	60	0,65	11140195
Side holder 900	800	18	60	0,75	11140205
Side holder 1000	500	18	60	0,85	11140215



Vertical cable organiser

- Proper cable separation from the cabinets' front panels
- For management, routing and concealment of copper and optical cable bundles
- Delivery includes two horizontal connecting links to which the organiser is mounted in the cabinet

Type	Index RAL7035	Index RAL7021
42U	11126420.1	11126420.2
45U	11126450.1	11126450.2
47U	11126470.1	11126470.2

Organization of cables



Cable holders

- To be fixed to the cabinet's mounting sections and frames
- To be fixed to the cabinet's mounting sections and frames

Type of holder	Index
40 x 40	11140895
40 x 80	11140635
80 x 80	11140645



Shelf for excess cable

- To manage the excess of station cables, patch cords and pigtails
- Material: steel sheet
- Height: 1U

Type	Width (mm)	Depth (mm)	Height (mm)	Weight (kg)	Index
1U	483	44	250	1,63	11140200



Wall shelf for excess cables

- To manage the excess of cables
- Consists of a frame and a case
- Material: steel sheet
- Capacity: max 120 linear meters of a cable 10 mm in diameter

Type	Width (mm)	Depth (mm)	Height (mm)	Weight (kg)	Index
Case	610	610	105	6,5	11190141
Frame	495	495	100	2,4	11190155
ECO frame	697	697	100	5	11190155.1



Optional - organizer with additional side holders

Plastic horizontal cable organizer with heightened flexibility

Features:

- Allows for clear organization of cabling
- Holders can be mounted horizontally as well as vertically
- Holes between holders allow for leading cables through the back of the organizer
- Additional side holders mounted at the side of the organizer allow for vertical organization of cabling
- Material - highly flexible plastic
- Standard: 19"

Type	Holder quantity	Index RAL9005
1U	5	11140101.3



Plastic cable organizer with heightened flexibility

Features:

- Allows for clear organization of cabling
- Mounted on the side of the horizontal cable organizer (11140100.3) without the use of tools
- Mountable on the side of mounting rails through the use of standard cage nuts
- Material - highly flexible plastic

Type	Index RAL9005
1U 40x80 mm	11140201.3
2U 80x80 mm	11140202.3

Accessories for standing and hanging 19" cabinets

Shelves



19" fixed shelf

- Front - mounted
- Made of steel sheet
- Standard coating, RAL 7035 (light grey)

Type	Depth (mm)	Weight (kg)	Load capacity (kg)	Index RAL7035	Index RAL7021
1U	250	1	10	11111125.1	11111125.2
2U	300	1,7	13	11111230.1	11111230.2



2U/19" fixed shelf with a sliding tray

- Made of steel sheet
- Standard coating, RAL 7035 (light grey)
- 2U holders mounted to the shelf with a sliding tray with step - adjustment of 25 mm

Type	Depth (mm)	Weight (kg)	Load capacity (kg)	Index RAL7035	Index RAL7021
2U	400	2	40	11115240.1	11115240.2V



1U/19" fixed shelf, mounted at four points

- Front and rear mounted
- Made of steel sheet
- Standard coating, RAL 7035 (light grey)
- Infinitely adjustable (within the below mounting range) rear holders

Type	Depth (mm)	Weight (kg)	Load capacity (kg)	Mounting range (mm)	Index RAL7035	Index RAL7021
1U	350	2,3	80	150 - 500	11111135.1V	11111135.2V
1U	450	2,8	80	250 - 600	11111145.1V	11111145.2V
1U	550	3,3	80	350 - 700	11111155.1V	11111155.2V
1U	650	3,8	80	450 - 800	11111165.1V	11111165.2V
1U	750	4,3	80	550 - 900	11111175.1V	11111175.2V



1U/19" shelf with adjustable depth

- Front and rear mounted
- Made of steel sheet
- Standard coating, RAL 7035 (light grey)
- Shelf depth step - adjustment of 25 mm

Type	Depth range (mm)	Weight (kg)	Load capacity (kg)	Index RAL7035	Index RAL7021
1U	350 - 600	4,7	150	11113136.1V	—
1U	500 - 900	6,5	150	11113159.1V	11113159.2V



2U/19" keyboard tray

- Made of steel sheet
- Standard coating, RAL 7035 (light grey)
- Lockable (two keys included)
- Retractable part fixed to ball bearings
- Width of usable area: 412

Type	Depth (mm)	Weight (kg)	Load capacity (kg)	Retraction (mm)	Index RAL7035	Index RAL7021
2U	350	7	3	185	11114235.1	11114235.2V



Retractable shelf

- Front and rear mounted
- Made of steel sheet
- Standard coating, RAL 7035 (light grey)
- Infinitely adjustable (within the below mounting range) rear holders
- Nice looking handle made of black plastic allows easy retraction of the movable part of the shelf

Type	Depth (mm)	Weight (kg)	Load capacity (kg)	Mounting range (mm)	Retraction (mm)	Index RAL7035	Index RAL7021
1U	300	3,5	80	150 - 500	175	11112130.1V	11112130.2V
1U	450	5,3	80	250 - 600	345	11112145.1V	11112145.2V
1U	650	6,7	80	350 - 700	545	11112165.1V	11112165.2V

Accessories for standing and hanging 19" cabinets

Cover and Cable grommet



Cable grommet

- Additional equipment for 19" cabinets, made of steel sheet
- Standard powder coating, RAL 7035 colour (light grey)

Type	Weight (kg)	Index RAL7035	Index RAL7021
1U	0,21	11140611	
1U with a brush	0,33	11140151	11140732



Cable grommet

- Mounted in a cable hole of a 19" cabinet

Type	Length (mm)	Weight (kg)	Index
For hanging cabinets	250	0,82	11140260
For standing cabinets	450	0,98	11140851



Additional shelf

- Additional equipment for 19" cabinets, made of steel sheet
- Powder coated, RAL 7035 colour (light grey)

Type	Weight (kg)	Index RAL7035	Index RAL7021
1U	0,25	11140231	11140502
2U	0,5	11140141	1114051
3U	0,6	11140521	11140532
6U	1,0	11140541	11140552



Blank panel - tool-free mounting

- Made of steel sheet RAL 9005
- Suitable for blanking free segments in the 19" area, providing appropriate separation of cold/hot air masses
- Easy mounting through the use of plastic latches

Type	Name	Index RAL9005
1U	Blank panel BKT 1U - tool - free mounting	11141101.3
2U	Blank panel BKT 2U - tool- free mounting	11141201.3

Accessories for standing and hanging 19" cabinets

Base and cabinet caster base strips



Set of cabinet casters

- Two normal casters + two casters with brakes
- Pin with M10 thread
- Cabinet casters with two bearing surfaces. They are made of high quality polyamide with high abrasion resistance. The casters have also high chemical resistance

Weight of entire set (kg)	Load capacity (kg)	Index
1,32	300	11190143



Cabinet caster base strips

- Mounted to the base of the frame cabinets and server cabinets
- Maximum load: 600 kg
- Brakes

Length (kg)	Load capacity (kg)	Index RAL7035
600	600	11190160
800	600	11190180



Base

- For mounting with distribution and SRS server cabinets
- Rear cover and side units with wide holes (250 x 70 mm) allowing easy routing of cable bundles (base equipped with one brush grommet)
- Front perforated cover
- Possibility of using floor - leveller feet (included in delivery)
- Material: steel sheet
- Load: 1000 kg

Width (mm)	Depth (mm)	Index RAL7035	Index RAL7021
600	600	11070660.1	11070660.2
600	800	11070680.1	11070680.2
600	900	11070690.1	11070690.2
600	1000	11070610.1	11070610.2
600	1200	11070612.1	11070612.2
800	800	11070880.1	11070880.2
800	1000	11070810.1	11070810.2
800	1200	11070812.1	11070812.2



Base with built-in counterweight

- For mounting with distribution and SRS server cabinets
- Rear cover and side units with wide holes (250 x 70 mm) allowing easy routing of cable bundles (base equipped with one brush grommet)
- Front perforated cover
- Possibility of using floor - leveller feet (included in delivery)
- Material: steel sheet
- Load: 1000 kg
- Height: 100 mm

Width (mm)	Depth (mm)	Height (mm)	Weight (kg)	Load capacity (kg)	Index RAL7035	Index RAL7021
600	1000	100	23	600	11071610.1	11071610.2
800	1000	100	25,5	600	11071810.1	11071810.2



Base counterweight

- To be mounted with bases
- Prevents the cabinet from tilting during use
- Material: steel sheet
- Height: 100 mm

Type	Index RAL7035	Index RAL7021
For server cabinets 600	11071610.1V	11071610.2V
For server cabinets 800	11071810.1V	11071810.2V



Angle brackets

- Made of steel sheet
- Standard coating, RAL 7035 (light grey)
- For mounting heavy devices in the cabinets
- Fixed directly to the mounting sections
- Two brackets per set

Type	Depth (mm)	Weight (kg)	Index RAL7035
600	340	1,7	11130051
800	540	2,6	11130061
900	640	3,1	11130071
1000	740	3,6	11130081



Voltage distribution panel

- Universal 19" casing for modular devices on TS35 rail
- Material: steel sheet
- Capacity: 18 modules 17.5 mm wide
- Height: 3U

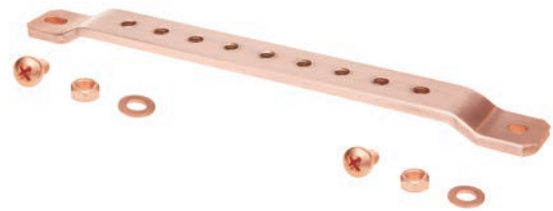
Type	Width (mm)	Depth (mm)	Height (mm)	Index RAL7035
3U	466 (19")	60	133	11140300



Light panel

- Made of steel sheet
- Standard powder coating, RAL 7035 colour (light grey)

Weight (kg)	Index RAL7035	Index RAL7021
1,4	24010010	24010011



Earthing strip

- Made of copper-plated sheet metal

Weight of entire set (kg)	Index
0,23	11160032

Technologies

Laser cutting

The laser technology allows us to cut irregular geometrical shapes in an effective way. For this purpose, we use CNC machines.



Cutting from Coil

The technology of sheet coil cutting on CNC machines is used for standard production lines which do not require frequent retooling.



Bending Centres

These are heavy duty devices on which longer production series are completed. The fully automated system of tool replacement and selection allows us to shape complicated items in a single operation, with minimum processing time.



Press bending

CNC cornice brakes with various specifications enable optimization of the bending process. Compatibility of standard and special sets of punches and matrices provides unlimited possibilities of item shaping.



Technologies

Robotic welding

This combines a modern welding source with a robot. Robotic welding has significantly increased effectiveness of the process.



Powder coating

Powder painting technology allows us to obtain coatings of exceptional qualities and high grade anticorrosive protection.



BKT ELEKTRONIK
69 Lochowska Str.
86-005 Biale Blota k/Bydgoszczy
tel. +48 52 36 36 772
fax. +48 52 36 36 370
e-mail: export@bkte.pl
www.bkte.pl